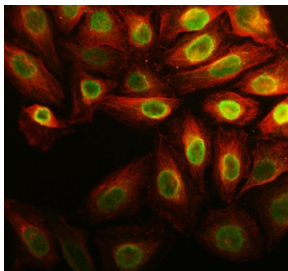


Anillin Antibody / Scraps (RQ4636)

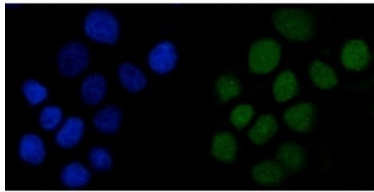
Catalog No.	Formulation	Size
RQ4636	0.5mg/ml if reconstituted with 0.2ml sterile DI water	100 ug

Bulk quote request

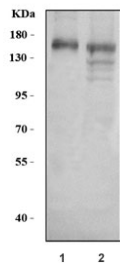
Availability	1-3 business days
Species Reactivity	Human, Mouse, Rat
Format	Antigen affinity purified
Host	Rabbit
Clonality	Polyclonal (rabbit origin)
Isotype	Rabbit IgG
Purity	Antigen affinity purified
Buffer	Lyophilized from 1X PBS with 2% Trehalose
UniProt	Q9NQW6
Localization	Nuclear, cytoplasmic
Applications	Western Blot : 0.5-1ug/ml Immunofluorescence : 5ug/ml Flow Cytometry : 1-3ug/million cells Immunoprecipitation : 2ug antibody/500ug lysate
Limitations	This Anillin antibody is available for research use only.



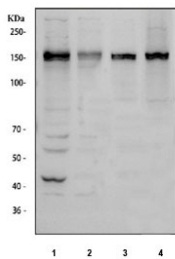
Immunofluorescent staining of FFPE human U-2 OS cells with Anillin antibody (green) and Alpha Tubulin mAb (red). HIER: steam section in pH6 citrate buffer for 20 min.



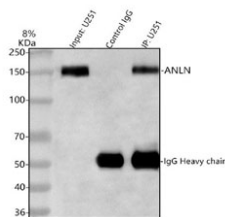
Immunofluorescent staining of FFPE human A431 cells with Anillin antibody (green) and DAPI nuclear stain (blue). HIER: steam section in pH6 citrate buffer for 20 min.



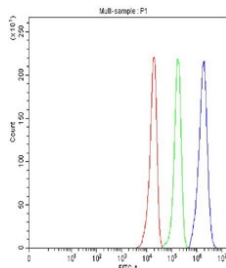
Western blot testing of human 1) HeLa and 2) 293T cell lysate with Anillin antibody at 0.5ug/ml. Predicted molecular weight ~124 kDa but may be observed at higher molecular weights due to glycosylation.



Western blot testing of 1) human HeLa, 2) human MCF7, 3) rat PC-12 and 4) mouse NIH 3T3 cell lysate with Anillin antibody. Predicted molecular weight ~124 kDa but may be observed at higher molecular weights due to glycosylation.



Immunoprecipitation of Anillin protein from 500ug of human U-251 whole cell lysate with 2ug of Anillin antibody.



Flow cytometry testing of fixed and permeabilized human U-251 cells with Anillin antibody at 1ug/million cells (blocked with goat sera); Red=cells alone, Green=isotype control, Blue= Anillin antibody.

Description

Anillin is a conserved protein implicated in cytoskeletal dynamics during cellularization and cytokinesis. This gene is mapped to 7p14.2. The ANLN gene in humans and the scraps gene in *Drosophila* encode Anillin. The human anillin cDNA, located on Chr7, encodes a 1,125-amino acid protein with a predicted molecular mass of 124 kD and a pI of 8.1. The mouse anillin gene is located on Chr9. This gene encodes an actin-binding protein that plays a role in cell growth and migration, and in cytokinesis. The encoded protein is thought to regulate actin cytoskeletal dynamics in podocytes, components of the glomerulus. Mutations in this gene are associated with focal segmental glomerulosclerosis 8. Alternative splicing results in multiple transcript variants encoding different isoforms.

Application Notes

Optimal dilution of the Anillin antibody should be determined by the researcher.

Immunogen

Amino acids KEERDLWMQKLNQVLVDIRLWQPDACYK were used as the immunogen for the Anillin antibody.

Storage

After reconstitution, the Anillin antibody can be stored for up to one month at 4oC. For long-term, aliquot and store at -20oC. Avoid repeated freezing and thawing.