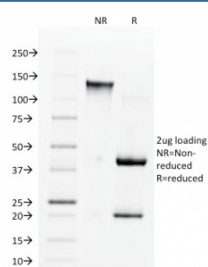


Angiotensin Converting Enzyme Antibody / ACE [clone 9B9] (V8895)

| Catalog No. | Formulation | Size |
|----------------|---|--------|
| V8895-100UG | 0.2 mg/ml in 1X PBS with 0.1 mg/ml BSA (US sourced), 0.05% sodium azide | 100 ug |
| V8895-20UG | 0.2 mg/ml in 1X PBS with 0.1 mg/ml BSA (US sourced), 0.05% sodium azide | 20 ug |
| V8895SAF-100UG | 1 mg/ml in 1X PBS; BSA free, sodium azide free | 100 ug |

[Bulk quote request](#)

| | |
|---------------------------|---|
| Availability | 1-3 business days |
| Species Reactivity | Human |
| Format | Purified |
| Host | Mouse |
| Clonality | Monoclonal (mouse origin) |
| Isotype | Mouse IgG1, kappa |
| Clone Name | 9B9 |
| Purity | Protein A/G affinity |
| UniProt | P12821 |
| Localization | Cell Surface |
| Applications | ELISA (order BSA-free Format For Coating) : |
| Limitations | This Angiotensin Converting Enzyme antibody is available for research use only. |



SDS-PAGE analysis of purified, BSA-free Angiotensin Converting Enzyme antibody (clone 9B9) as confirmation of integrity and purity.

Description

Converts angiotensin I to angiotensin II by release of the terminal His-Leu, this results in an increase of the vasoconstrictor activity of angiotensin. [UniProt]

Application Notes

Optimal dilution of the Angiotensin Converting Enzyme antibody should be determined by the researcher.

Immunogen

Full-length recombinant human ACE/CD143 protein was used as the immunogen for the Angiotensin Converting Enzyme antibody.

Storage

Aliquot the Angiotensin Converting Enzyme antibody and store frozen at -20oC or colder. Avoid repeated freeze-thaw cycles.