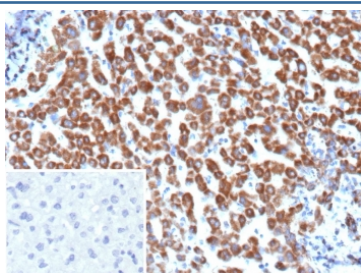


Angiopoietin 1 Antibody / ANGPT1 [clone ANGPT1/3651] (V5719)

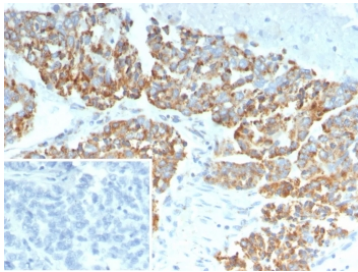
Catalog No.	Formulation	Size
V5719-100UG	0.2 mg/ml in 1X PBS with 0.1 mg/ml BSA (US sourced), 0.05% sodium azide	100 ug
V5719-20UG	0.2 mg/ml in 1X PBS with 0.1 mg/ml BSA (US sourced), 0.05% sodium azide	20 ug
V5719SAF-100UG	1 mg/ml in 1X PBS; BSA free, sodium azide free	100 ug

[Bulk quote request](#)

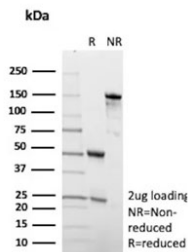
Availability	1-3 business days
Species Reactivity	Human
Format	Purified
Host	Mouse
Clonality	Monoclonal (mouse origin)
Isotype	Mouse IgG1, kappa
Clone Name	ANGPT1/3651
Purity	Protein G affinity
UniProt	Q15389
Localization	Secreted, Intracellular
Applications	Immunohistochemistry (FFPE) : 1-2ug/ml
Limitations	This Angiopoietin 1 antibody is available for research use only.



IHC staining of FFPE human hepatocellular carcinoma tissue with Angiopoietin 1 antibody (clone ANGPT1/3651). Inset: PBS used in place of primary Ab (secondary Ab negative control). HIER: boil tissue sections in pH 9 10mM Tris with 1mM EDTA for 20 min and allow to cool before testing.



IHC staining of FFPE human ovarian carcinoma tissue with Angiopoietin 1 antibody (clone ANGPT1/3651). Inset: PBS used in place of primary Ab (secondary Ab negative control). HIER: boil tissue sections in pH 9 10mM Tris with 1mM EDTA for 20 min and allow to cool before testing.



SDS-PAGE analysis of purified, BSA-free Angiopoietin 1 antibody (clone ANGPT1/3651) as confirmation of integrity and purity.

Description

This gene encodes a secreted glycoprotein that belongs to the angiopoietin family. Members of this family play important roles in vascular development and angiogenesis. All angiopoietins bind with similar affinity to an endothelial cell-specific tyrosine-protein kinase receptor. The protein encoded by this gene is a secreted glycoprotein that activates the receptor by inducing its tyrosine phosphorylation. It plays a critical role in mediating reciprocal interactions between the endothelium and surrounding matrix and mesenchyme and inhibits endothelial permeability. The protein also contributes to blood vessel maturation and stability, and may be involved in early development of the heart. Mutations in this gene are associated with hereditary angioedema.

Application Notes

Optimal dilution of the Angiopoietin 1 antibody should be determined by the researcher.

Immunogen

A portion of amino acids 1-200 from human AGPAT1 protein was used as the immunogen for the Angiopoietin 1 antibody.

Storage

Aliquot the Angiopoietin 1 antibody and store frozen at -20oC or colder. Avoid repeated freeze-thaw cycles.