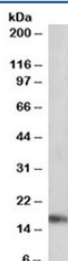


## ANF Antibody / ANP / Atrial Natriuretic Factor (R35636)

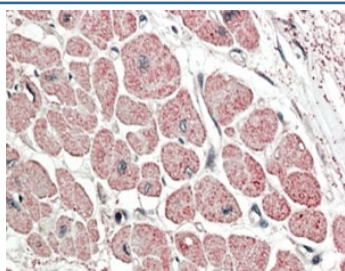
Catalog No.	Formulation	Size
R35636-100UG	0.5 mg/ml in 1X TBS, pH7.3, with 0.5% BSA (US sourced) and 0.02% sodium azide	100 ug

[Bulk quote request](#)

Availability	1-3 business days
Species Reactivity	Human, Mouse, Rat
Predicted Reactivity	Cow, Dog, Pig
Format	Antigen affinity purified
Clonality	Polyclonal (goat origin)
Isotype	Goat Ig
Purity	Antigen affinity
Gene ID	4878
Applications	Western Blot : 0.01-0.03ug/ml Immunohistochemistry (FFPE) : 5-10ug/ml ELISA (peptide) LOD : 1:32000
Limitations	This ANF antibody is available for research use only.



Western blot testing of mouse heart lysate with ANF antibody at 0.01ug/ml. Predicted molecular weight ~17kDa.



IHC staining of FFPE human heart with ANF antibody at 5ug/ml. HIER: steamed with pH6 citrate buffer, AP-staining.

## Description

Additional name(s) for this target protein: Atrial natriuretic factor, Atrial natriuretic peptide (ANP), NPPA, natriuretic peptide precursor A

## Application Notes

Optimal dilution of the ANF antibody should be determined by the researcher.

## Immunogen

Amino acids RIGAQSGGLGCNSFR were used as the immunogen for this ANF antibody.

## Storage

Aliquot and store the ANF antibody at -20oC.