

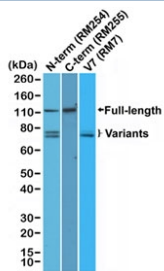
## Androgen Receptor Antibody / C-terminus [clone RM255] (R20341)

Catalog No.	Formulation	Size
R20341-0.1ML	Antibody in PBS with 50% glycerol, 1% BSA and 0.09% sodium azide	100 ul

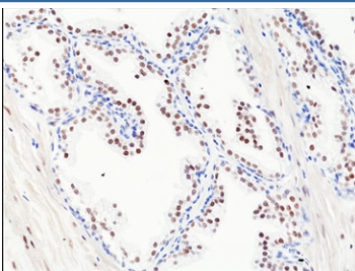
Recombinant **RABBIT MONOCLONAL**

[Bulk quote request](#)

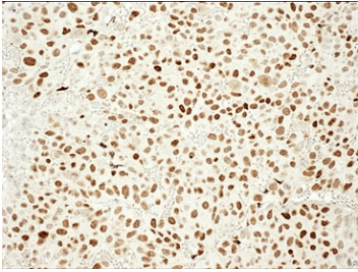
<b>Availability</b>	1-3 business days
<b>Species Reactivity</b>	Human
<b>Format</b>	Purified
<b>Clonality</b>	Recombinant Rabbit Monoclonal
<b>Isotype</b>	Rabbit IgG
<b>Clone Name</b>	RM255
<b>Purity</b>	Protein A purified from animal origin-free supernatant
<b>UniProt</b>	P10275
<b>Applications</b>	Immunohistochemistry (FFPE) : 1:200-1:2000 Western Blot : 1:200-1:1000
<b>Limitations</b>	This recombinant Androgen Receptor antibody is available for research use only.



Western blot testing of human 22RV1 cell lysate with Androgen Receptor antibody: cat no. R20274, cat no. R20341 and cat no. R20481, respectively.



IHC staining of FFPE human prostate cancer tissue with recombinant Androgen Receptor antibody at 1:200.



IHC staining of FFPE mouse xenograft LNCaP95 tumor tissue sections with recombinant Androgen Receptor antibody at 1:2000. Courtesy of Dr. Stephen Plymate, University of Washington, Washington USA.

## Description

This antibody reacts to full length androgen receptor.

## Application Notes

The stated application concentrations are suggested starting points. Titration of the recombinant Androgen Receptor antibody may be required due to differences in protocols and secondary/substrate sensitivity.

## Immunogen

A peptide corresponding to the C-terminus of Androgen Receptor was used as the immunogen for the Androgen Receptor antibody.

## Storage

Store the recombinant Androgen Receptor antibody at -20oC.