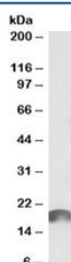


## ANAPC11 Antibody / APC11 (R34956)

Catalog No.	Formulation	Size
R34956-100UG	0.5 mg/ml in 1X TBS, pH7.3, with 0.5% BSA (US sourced) and 0.02% sodium azide	100 ug

[Bulk quote request](#)

Availability	1-3 business days
Species Reactivity	Human
Format	Antigen affinity purified
Clonality	Polyclonal (goat origin)
Isotype	Goat Ig
Purity	Antigen affinity
UniProt	Q9NYG5
Gene ID	51529
Applications	Western Blot : 0.3-1ug/ml ELISA (peptide) LOD : 1:32000
Limitations	This ANAPC11 antibody is available for research use only.



Western blot testing of cerebral cortex lysate with ANAPC11 antibody at 1ug/ml.  
Predicted molecular weight: ~20kDa (NCBI # NP\_001002244.1 or UniProt # Q9NYG5-2).

## Description

Additional name(s) for this target protein: Anaphase promoting complex subunit 11

## Application Notes

Optimal dilution of the ANAPC11 antibody should be determined by the researcher.

## Immunogen

Amino acids PALDQETSSLLRCTS (NCBI# NP\_001002244.1 or UniProt# Q9NYG5-2) were used as the immunogen for this ANAPC11 antibody.

## Storage

Aliquot and store the ANAPC11 antibody at -20oC.