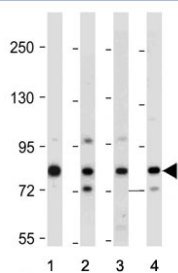


AMOTL2 Antibody / Angiotensin-like protein 2 (F55097)

Catalog No.	Formulation	Size
F55097-0.4ML	In 1X PBS, pH 7.4, with 0.09% sodium azide	0.4 ml
F55097-0.08ML	In 1X PBS, pH 7.4, with 0.09% sodium azide	0.08 ml

[Bulk quote request](#)

Availability	1-3 business days
Species Reactivity	Human
Format	Purified
Host	Rabbit
Clonality	Polyclonal (rabbit origin)
Isotype	Rabbit Ig
Purity	Antigen affinity
UniProt	Q9Y2J4
Applications	Western Blot : 1:1000-1:2000
Limitations	This AMOTL2 antibody is available for research use only.



Western blot testing of human 1) A431, 2) A375, 3) HUVEC and 4) Caco-2 cell lysate with AMOTL2 antibody. Predicted molecular weight ~86 kDa.

Description

AMOTL2 is a member of the angiotensin family of proteins, which are involved in the development and maintenance of blood vessels. It functions as a scaffold protein that helps to organize signaling pathways involved in cell growth and movement. Studies have shown that AMOTL2 is essential for normal development and function of multiple tissues and organs, including the heart, lungs, and kidneys. One of the most intriguing aspects of AMOTL2 is its potential role in cancer progression. Research has shown that dysregulation of AMOTL2 expression is associated with various types of cancer, including breast, lung, and prostate cancer. In some cases, AMOTL2 acts as a tumor suppressor, inhibiting cancer cell growth and metastasis. In other cases, it can promote tumor progression by enhancing angiogenesis and

invasiveness.

Application Notes

The stated application concentrations are suggested starting points. Titration of the AMOTL2 antibody may be required due to differences in protocols and secondary/substrate sensitivity.

Immunogen

A portion of amino acids 126-152 from the human protein was used as the immunogen for the AMOTL2 antibody.

Storage

Aliquot the AMOTL2 antibody and store frozen at -20oC or colder. Avoid repeated freeze-thaw cycles.