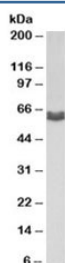


## AMHR2 Antibody (R33995)

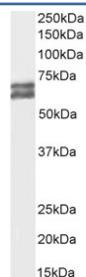
Catalog No.	Formulation	Size
R33995-100UG	0.5 mg/ml in 1X TBS, pH7.3, with 0.5% BSA (US sourced) and 0.02% sodium azide	100 ug

[Bulk quote request](#)

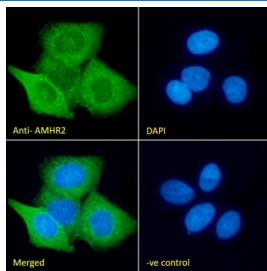
Availability	1-3 business days
Species Reactivity	Human
Format	Antigen affinity purified
Host	Goat
Clonality	Polyclonal (goat origin)
Isotype	Goat Ig
Purity	Antigen affinity
Gene ID	269
Applications	Western Blot : 1-3ug/ml IF/ICC : 10ug/ml Flow Cytometry : 10ug/ml ELISA (peptide) LOD : 1:128000
Limitations	This AMHR2 antibody is available for research use only.



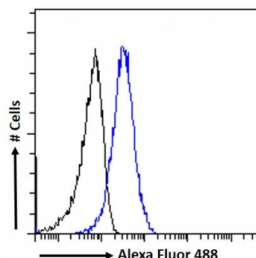
Western blot testing of human MDA-MB-231 cell lysate with AMHR2 antibody at 1ug/ml.  
Predicted molecular weight: ~63/52/52 kDa (isoforms 1/2/3).



Western blot testing of human MCF7 cell lysate with AMHR2 antibody at 1ug/ml.  
Predicted molecular weight: ~63/52/52 kDa (isoforms 1/2/3).



IF/ICC staining of fixed and permeabilized human MCF7 cells with AMHR2 antibody (green) at 10ug/ml and DAPI nuclear stain (blue).



FACS testing of fixed and permeabilized human MCF7 cells with AMHR2 antibody (blue) at 10ug/ml and naive goat Ig (black).

## Description

Additional name(s) for this target protein: Mullerian hormone receptor, type II

## Application Notes

Optimal dilution of the AMHR2 antibody should be determined by the researcher.

1. This Ab can detect isoforms 1, 2 and 3.

## Immunogen

Amino acids ESLHCDPSPRAH were used as the immunogen for this AMHR2 antibody. (1)

## Storage

Aliquot and store the AMHR2 antibody at -20oC.