

## AMFR Antibody (F40060)

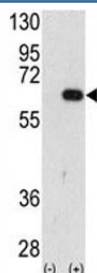
Catalog No.	Formulation	Size
F40060-0.4ML	In 1X PBS, pH 7.4, with 0.09% sodium azide	0.4 ml
F40060-0.08ML	In 1X PBS, pH 7.4, with 0.09% sodium azide	0.08 ml



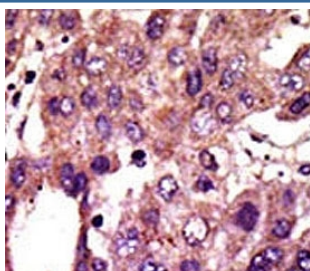
Citations (1)

[Bulk quote request](#)

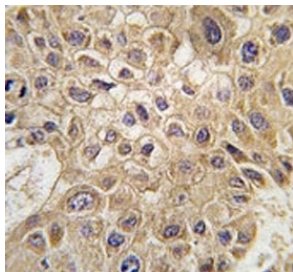
Availability	1-3 business days
Species Reactivity	Human
Format	Purified
Clonality	Polyclonal (rabbit origin)
Isotype	Rabbit Ig
Purity	Purified
UniProt	Q9UKV5
Applications	Western Blot : 1:1000 IHC (Paraffin) : 1:50-1:100 Flow Cytometry : 1:10-1:50
Limitations	This AMFR antibody is available for research use only.



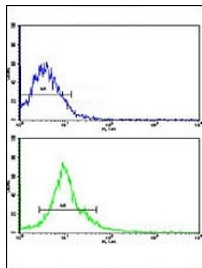
Western blot analysis of AMFR antibody and 293 cell lysate (2 ug/lane) either nontransfected (Lane 1) or transiently transfected with the AMFR gene (2).



IHC analysis of FFPE human hepatocarcinoma stained with the AMFR antibody.



IHC analysis of FFPE human hepatocarcinoma tissue stained with AMFR antibody



Flow cytometric analysis of HepG2 cells using AMFR antibody (green) compared to a negative control cell (blue). FITC-conjugated goat-anti-rabbit secondary Ab was used for the analysis.

## Description

Autocrine motility factor receptor is involved in cell motility via its binding to AMF.

## Application Notes

Titration of the AMFR antibody may be required due to differences in protocols and secondary/substrate sensitivity.

## Immunogen

A portion of amino acids 571-601 from the human protein was used as the immunogen for this AMFR antibody.

## Storage

Aliquot the AMFR antibody and store frozen at -20oC or colder. Avoid repeated freeze-thaw cycles.