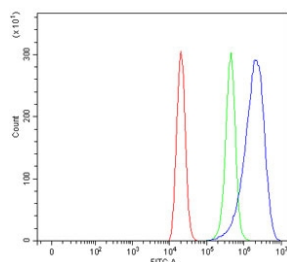


AMCase Antibody / CHIA (RQ6845)

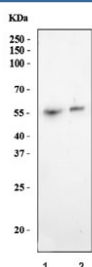
Catalog No.	Formulation	Size
RQ6845	0.5mg/ml if reconstituted with 0.2ml sterile DI water	100 ug

Bulk quote request

Availability	1-3 business days
Species Reactivity	Human, Mouse, Rat
Format	Antigen affinity purified
Clonality	Polyclonal (rabbit origin)
Isotype	Rabbit IgG
Purity	Antigen affinity purified
Buffer	Lyophilized from 1X PBS with 2% Trehalose
UniProt	Q9BZP6
Applications	Western Blot : 1-2ug/ml Flow Cytometry : 1-3ug/million cells Direct ELISA : 0.1-0.5ug/ml
Limitations	This AMCase antibody is available for research use only.



Flow cytometry testing of human ThP-1 cells with AMCase antibody at 1ug/million cells (blocked with goat sera); Red=cells alone, Green=isotype control, Blue= AMCase antibody.



Western blot testing of 1) rat stomach and 2) mouse stomach tissue lysate with AMCase antibody. Predicted molecular weight ~52 kDa.

Description

The protein encoded by this gene degrades chitin, which is found in the cell wall of most fungi as well as in arthropods and some nematodes. The encoded protein can also stimulate interleukin 13 expression, and variations in this gene can lead to asthma susceptibility. Several transcript variants encoding a few different isoforms have been found for this gene.

Application Notes

Optimal dilution of the AMCase antibody should be determined by the researcher.

Immunogen

Recombinant human protein (amino acids L228-A476) was used as the immunogen for the AMCase antibody.

Storage

After reconstitution, the AMCase antibody can be stored for up to one month at 4oC. For long-term, aliquot and store at -20oC. Avoid repeated freezing and thawing.