

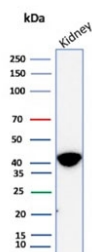
AMACR / p504S Antibody [clone AMACR/8350R] (V5080)

Catalog No.	Formulation	Size
V5080-100UG	0.2 mg/ml in 1X PBS with 0.1 mg/ml BSA (US sourced), 0.05% sodium azide	100 ug
V5080-20UG	0.2 mg/ml in 1X PBS with 0.1 mg/ml BSA (US sourced), 0.05% sodium azide	20 ug
V5080SAF-100UG	1 mg/ml in 1X PBS; BSA free, sodium azide free	100 ug

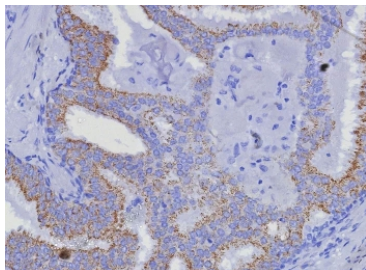
Recombinant **RABBIT MONOCLONAL**

[Bulk quote request](#)

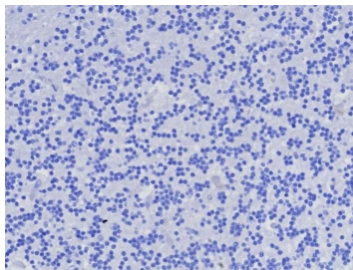
Availability	1-3 business days
Species Reactivity	Human
Format	Purified
Host	Rabbit
Clonality	Recombinant Rabbit Monoclonal
Isotype	Rabbit IgG, kappa
Clone Name	AMACR/8350R
Purity	Protein A/G affinity
UniProt	Q9UHK6
Localization	Cytoplasm (granular)
Applications	Immunohistochemistry (FFPE) : 1-2ug/ml for 30 min at RT Western Blot : 2-4ug/ml
Limitations	This AMACR / p504S antibody is available for research use only.



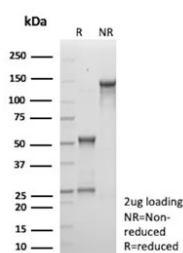
Western blot testing of human kidney tissue lysate with AMACR antibody (clone AMACR/8350R). Predicted molecular weight ~43 kDa.



IHC staining of FFPE human prostate carcinoma tissue with AMACR antibody (clone AMACR/8350R). HIER: boil tissue sections in pH 9 10mM Tris with 1mM EDTA for 20 min and allow to cool before testing.



Negative control: IHC testing of FFPE human brain tissue with AMACR antibody (clone AMACR/8350R) at 2ug/ml. HIER: boil tissue sections in pH 9 10mM Tris with 1mM EDTA for 20 min and allow to cool before testing.



SDS-PAGE analysis of purified, BSA-free AMACR antibody (clone AMACR/8350R) as confirmation of integrity and purity.

Description

This antibody recognizes a protein of 42kDa, which is identified as AMACR, also known as p504S. It is an enzyme that is involved in bile acid biosynthesis and beta-oxidation of branched-chain fatty acids. AMACR is essential in lipid metabolism. It is expressed in cells of premalignant high-grade prostatic intraepithelial neoplasia (HGPIN) and prostate adenocarcinoma. The majority of the carcinoma cells show a distinct granular cytoplasmic staining reaction. AMACR is present at low or undetectable levels in glandular epithelial cells of normal prostate and benign prostatic hyperplasia. A spotty granular cytoplasmic staining is seen in a few cells of the benign glands. AMACR is expressed in normal liver (hepatocytes), kidney (tubular epithelial cells) and gall bladder (epithelial cells). Expression has also been found in lung (bronchial epithelial cells) and colon (colonic surface epithelium). AMACR expression can also be found in hepatocellular carcinoma and kidney carcinoma. Past studies have also shown that AMACR is expressed in various colon carcinomas (well, moderately and poorly differentiated) and over expressed in prostate carcinoma.

Application Notes

Optimal dilution of the AMACR / p504S antibody should be determined by the researcher.

Immunogen

Recombinant full-length human AMACR protein was used as the immunogen for the AMACR / p504S antibody.

Storage

Aliquot the AMACR / p504S antibody and store frozen at -20oC or colder. Avoid repeated freeze-thaw cycles.

