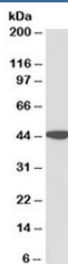


## AMACR Antibody (R35622)

Catalog No.	Formulation	Size
R35622-100UG	0.5 mg/ml in 1X TBS, pH7.3, with 0.5% BSA (US sourced) and 0.02% sodium azide	100 ug

[Bulk quote request](#)

<b>Availability</b>	1-3 business days
<b>Species Reactivity</b>	Human
<b>Format</b>	Antigen affinity purified
<b>Host</b>	Goat
<b>Clonality</b>	Polyclonal (goat origin)
<b>Isotype</b>	Goat Ig
<b>Purity</b>	Antigen affinity
<b>Gene ID</b>	23600
<b>Applications</b>	Western Blot : 0.1-0.3ug/ml ELISA (peptide) LOD : 1:64000
<b>Limitations</b>	This AMACR antibody is available for research use only.



Western blot testing of human kidney lysate with AMACR antibody at 0.1ug/ml.  
Predicted molecular weight ~43kDa.

### Description

Additional name(s) for this target protein: Alpha-methylacyl-CoA racemase

For additional AMACR and p504S research antibodies validated by protein microarray specificity analysis, western blotting, and immunohistochemistry, explore the broader [AMACR Antibody page](#) featuring clone AMACR/1864.

### Application Notes

Optimal dilution of the AMACR antibody should be determined by the researcher.

1. This AMACR antibody will detect isoforms 1/3.

## **Immunogen**

Amino acids RGSFITSEEQDVSPR were used as the immunogen for this AMACR antibody.

## **Storage**

Aliquot and store the AMACR antibody at -20oC.