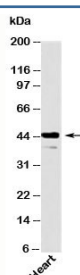


Als2Cr2 Antibody / STRADB / ILPIP (N1046)

Catalog No.	Formulation	Size
N1046-100UG	0.5 mg/ml in 1X PBS with 0.1 mg/ml BSA (US sourced), 0.05% sodium azide	100 ug
N1046-25UG	0.5 mg/ml in 1X PBS with 0.1 mg/ml BSA (US sourced), 0.05% sodium azide	25 ug

[Bulk quote request](#)

Species Reactivity	Human, Mouse, Rat
Format	Purified
Clonality	Polyclonal (rabbit origin)
Isotype	Rabbit IgG
Purity	Protein A affinity chromatography
Buffer	1X PBS, pH 7.4
Gene ID	55437
Applications	Western Blot : 5-10ug/ml
Limitations	This Als2Cr2 antibody is available for research use only.



Western blot testing of human samples with Als2Cr2 antibody at 6ug/ml.

Description

Als2Cr2, also called STE20-related kinase adapter protein beta (STRAD beta) and ILPIP, is a serine/threonine protein kinase encoded by the STRADB gene, discovered as an XIAP interacting protein. It is a mediator of the XIAP/TAK1 activation of the JNK1 pathway, an apoptosis inhibition mechanism independent of XIAP inhibition of caspases. Alone, it only moderately activates JNKs, but its interaction with XIAP/TAK1 induces a much stronger activation of JNK1, protecting against Caspase 1- or Fas-induced apoptosis.

Application Notes

Provided assay concentrations are suggestions only, Als2Cr2 antibody titration may be required for optimal results. This

antibody will detect the 418 (ILPIP alpha) and 280 (ILPIP beta) amino acid isoforms.

Immunogen

A recombinant protein fragment from the interior region of human Als2Cr2 was used as the immunogen for this antibody.

Storage

Aliquot the Als2Cr2 antibody and store frozen at -20oC or colder. Avoid repeated freeze-thaw cycles.

Alternate Names

Amyotrophic lateral sclerosis 2 chromosome region candidate 2, ILPIP, STRADB

References (2)