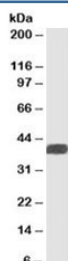


ALS2CR1 Antibody (R34338)

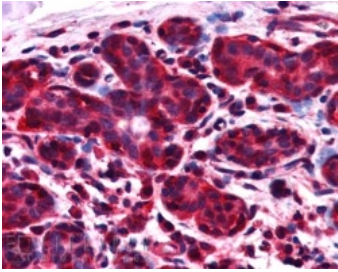
Catalog No.	Formulation	Size
R34338-100UG	0.5 mg/ml in 1X TBS, pH7.3, with 0.5% BSA (US sourced) and 0.02% sodium azide	100 ug

[Bulk quote request](#)

Availability	1-3 business days
Species Reactivity	Human
Predicted Reactivity	Mouse
Format	Antigen affinity purified
Host	Goat
Clonality	Polyclonal (goat origin)
Isotype	Goat Ig
Purity	Antigen affinity
Gene ID	60491
Applications	Western Blot : 1-3ug/ml Immunohistochemistry (FFPE) : 2-4ug/ml ELISA (peptide) LOD : 1:32000
Limitations	This ALS2CR1 antibody is available for research use only.



Western blot testing of human heart lysate with ALS2CR1 antibody at 1ug/ml.
Predicted/observed molecular weight: ~40kDa.



IHC staining of FFPE human breast with ALS2CR1 antibody at 2.5ug/ml. HIER: steamed with pH6 citrate buffer, AP-staining.

Description

Additional name(s) for this target protein: Amyotrophic lateral sclerosis 2 (juvenile) chromosome region, candidate 1; NIF3L1

Application Notes

Optimal dilution of the ALS2CR1 antibody should be determined by the researcher.

Immunogen

Amino acids ILSETDRDPLQVV were used as the immunogen for this ALS2CR1 antibody.

Storage

Aliquot and store the ALS2CR1 antibody at -20oC.