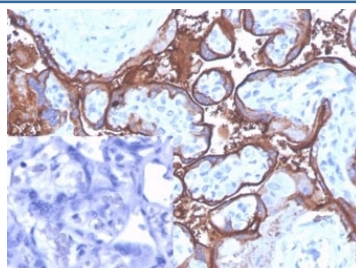


## ALPP Antibody / Placental Alkaline Phosphatase [clone ALPP/4109] (V9467)

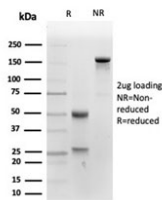
Catalog No.	Formulation	Size
V9467-100UG	0.2 mg/ml in 1X PBS with 0.1 mg/ml BSA (US sourced), 0.05% sodium azide	100 ug
V9467-20UG	0.2 mg/ml in 1X PBS with 0.1 mg/ml BSA (US sourced), 0.05% sodium azide	20 ug
V9467SAF-100UG	1 mg/ml in 1X PBS; BSA free, sodium azide free	100 ug

[Bulk quote request](#)

<b>Availability</b>	1-3 business days
<b>Species Reactivity</b>	Human
<b>Format</b>	Purified
<b>Clonality</b>	Monoclonal (mouse origin)
<b>Isotype</b>	Mouse IgG2b, kappa
<b>Clone Name</b>	ALPP/4109
<b>Purity</b>	Protein A/G affinity
<b>UniProt</b>	P05187
<b>Localization</b>	Cytoplasmic, Cell surface
<b>Applications</b>	Immunohistochemistry (FFPE) : 1-2ug/ml
<b>Limitations</b>	This ALPP antibody is available for research use only.



IHC staining of FFPE human placental tissue with ALPP antibody (clone ALPP/4109) at 2ug/ml in PBS for 30min RT. Negative control inset: PBS instead of primary antibody to control for secondary binding. HIER: boil tissue sections in pH 9 10mM Tris with 1mM EDTA for 20 min and allow to cool before testing.



SDS-PAGE analysis of purified, BSA-free ALPP antibody (clone ALPP/4109) as confirmation of integrity and purity.

## Description

Reacts with a 70kDa membrane-bound isozyme (Regan and Nagao type) of Placental Alkaline Phosphatase (PLAP) occurring in the placenta during the 3rd trimester of gestation. It is highly specific for PLAP and shows no cross-reaction with other isozymes of alkaline phosphatase. Anti-PLAP reacts with germ cell tumors and can discriminate between these and other neoplasms. Somatic neoplasms e.g. breast, gastrointestinal, prostatic, and urinary cancers may also immunoreact with antibodies to PLAP. Anti-PLAP positivity in conjunction with anti-keratin negativity favors seminoma over carcinoma. Germ cell tumors are usually anti-keratin positive, but they regularly fail to stain with anti-EMA, whereas most carcinomas stain with anti-EMA. Anti-PLAP has been useful in the diagnosis of gestational trophoblastic disease.

## Application Notes

Optimal dilution of the ALPP antibody should be determined by the researcher.

## Immunogen

Recombinant full-length human ALPP protein was used as the immunogen for the ALPP antibody.

## Storage

Aliquot the ALPP antibody and store frozen at -20°C or colder. Avoid repeated freeze-thaw cycles.