

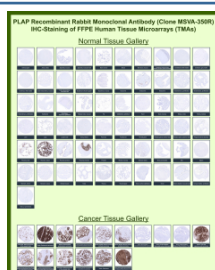
## ALPP Antibody / Alkaline phosphatase placental [clone MSVA-350R] (V6078)

Catalog No.	Formulation	Size
V6078-100UG	Antibody in 1X PBS with 0.05% BSA, 0.05% sodium azide	100 ug
V6078-20UG	Antibody in 1X PBS with 0.05% BSA, 0.05% sodium azide	20 ug

Recombinant **RABBIT MONOCLONAL**

[Bulk quote request](#)

<b>Species Reactivity</b>	Human
<b>Format</b>	Purified
<b>Host</b>	Rabbit
<b>Clonality</b>	Recombinant Rabbit Monoclonal
<b>Isotype</b>	Rabbit IgG, kappa
<b>Clone Name</b>	MSVA-350R
<b>UniProt</b>	P05187
<b>Localization</b>	Cell membrane
<b>Applications</b>	Immunohistochemistry (FFPE) : 1-2ug/ml
<b>Limitations</b>	This ALPP/Alkaline phosphatase placental antibody is available for research use only.



Alkaline phosphatase, placental type Rabbit Recombinant Monoclonal Antibody (MSVA-350R) tested on many normal and cancer tissues. The immunohistochemistry staining in these tissues aligns with the expression data in Human Protein Atlas.

Manual Protocol: Freshly cut sections should be used (less than 10 days between cutting and staining). Heat-induced antigen retrieval for 5 minutes in an autoclave at 121°C in pH 7.8 Target Retrieval Solution buffer. Apply the antibody at a dilution of 1:150 at 37°C for 60 minutes. Visualization of bound antibody by the EnVision Kit (Dako, Agilent) according to the manufacturer's directions.

### Application Notes

- Optimal dilution of the ALPP/Alkaline phosphatase placental antibody should be determined by the researcher.
- This ALPP/Alkaline phosphatase placental antibody is recombinantly produced by expression in human HEK293 cells.

## Immunogen

Recombinant full-length human ALPP protein was used as the immunogen for the ALPP/Alkaline phosphatase placental antibody.

## Storage

ALPP/Alkaline phosphatase placental antibody with sodium azide - store at 2 to 8°C; antibody without sodium azide - store at -20 to -80°C.