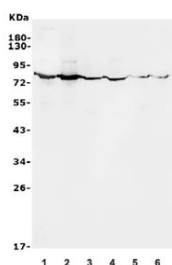


ALPL Antibody / Tissue-nonspecific Alkaline Phosphatase (RQ5700)

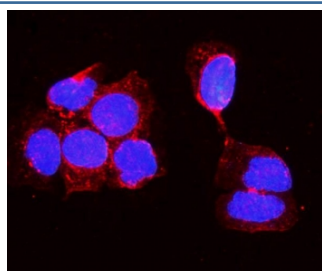
Catalog No.	Formulation	Size
RQ5700	0.5mg/ml if reconstituted with 0.2ml sterile DI water	100 ug

Bulk quote request

Availability	1-3 business days
Species Reactivity	Human, Mouse, Rat
Format	Antigen affinity purified
Host	Rabbit
Clonality	Polyclonal
Isotype	Rabbit IgG
Purity	Affinity purified
Buffer	Lyophilized from 1X PBS with 2% Trehalose and 0.025% sodium azide
UniProt	P05186
Applications	Western Blot : 0.5-1ug/ml Immunofluorescence : 2-4ug/ml Direct ELISA : 0.1-0.5ug/ml
Limitations	This ALPL antibody is available for research use only.



Western blot testing of 1) human HeLa, 2) human HEK293, 3) rat kidney, 4) rat RH35, 5) mouse kidney and 6) mouse HEPA1-6 lysate with ALPL antibody. Predicted molecular weight ~57 kDa, but can be observed at up to ~75 kDa due to glycosylation.



Immunofluorescent staining of FFPE human A431 cells with ALPL antibody (red) and DAPI nuclear stain (blue). HIER: steam section in pH6 citrate buffer for 20 min.

Description

Alkaline phosphatase (ALPL) removes phosphate groups from the 5' end of DNA and RNA, and from proteins, at high pH. Most mammals have 4 different isozymes: placental, placental like, intestinal and non tissue specific (found in liver, kidney and bone). Tissues with particularly high concentrations of ALP include the liver, bile ducts, placenta, and bone. ALPL is the alkaline phosphatase of skin fibroblasts, the tissue-nonspecific type, and that it is active toward millimolar concentrations of the putative natural substrates phosphoethanolamine (PEA) and pyridoxal-5-prime-phosphate (PLP). ALPL gene exists in single copy in the haploid genome and is composed of 12 exons distributed over more than 50 kb. Damaged or diseased tissue releases enzymes into the blood, so serum ALP measurements can be abnormal in many conditions, including bone disease and liver disease.

Application Notes

Optimal dilution of the ALPL antibody should be determined by the researcher.

Immunogen

Recombinant human protein (amino acids K229-H482) was used as the immunogen for the ALPL antibody.

Storage

After reconstitution, the ALPL antibody can be stored for up to one month at 4°C. For long-term, aliquot and store at -20°C. Avoid repeated freezing and thawing.