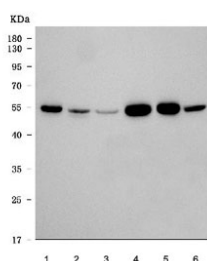


Alpha Tubulin Antibody / TUBA1A [clone DM1A] (R30095)

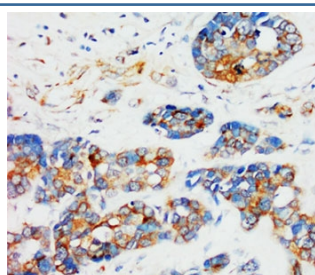
Catalog No.	Formulation	Size
R30095	0.5mg/ml with 1% BSA and 0.01% sodium azide if reconstituted with 0.2ml sterile 1X PBS	100 ug

[Bulk quote request](#)

Availability	1-3 business days
Species Reactivity	Human, Mouse, Rat, Chicken
Format	Ascites
Host	Mouse
Clonality	Monoclonal (mouse origin)
Isotype	Mouse IgG1
Clone Name	DM1A
Purity	Unpurified ascites
UniProt	P68366
Applications	Western Blot : 1-2ug/ml Immunohistochemistry (FFPE) : 1-2ug/ml
Limitations	This Alpha Tubulin antibody is available for research use only.



Western blot testing of 1) human SH-SY5Y, 2) human Jurkat, 3) human A549, 4) rat brain, 5) mouse brain and 6) mouse thymus tissue lysate with Alpha Tubulin antibody. Predicted molecular weight ~50 kDa.



IHC-P: Alpha Tubulin antibody testing of human breast cancer tissue.

Description

Alpha-tubulin (b-alpha-1) mRNA is expressed at a molecular weight of about 50-55,000D. The 3-prime UTR of the protein is more than 80% homologous to the UTR of the rat brain alpha-tubulin gene IL-alpha-T1. Alpha tubulin is a predicted 451-amino acid protein that is 100% identical to the rat homolog and differs by only 2 and 3 amino acids from the pig and chicken homologs, respectively.

Application Notes

The stated application concentrations are suggested starting points. Titration of the Alpha Tubulin antibody may be required due to differences in protocols and secondary/substrate sensitivity.

Immunogen

Microtubules from chicken embryo brain was used as the immunogen for this Alpha Tubulin antibody.

Storage

After reconstitution, the Alpha Tubulin antibody can be stored for up to one month at 4oC. For long-term, aliquot and store at -20oC. Avoid repeated freezing and thawing.