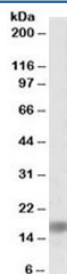


Alpha-Synuclein Antibody / SNCA (R34381)

Catalog No.	Formulation	Size
R34381-100UG	0.5 mg/ml in 1X TBS, pH7.3, with 0.5% BSA (US sourced) and 0.02% sodium azide	100 ug

[Bulk quote request](#)

Availability	1-3 business days
Species Reactivity	Human
Predicted Reactivity	Pig
Format	Antigen affinity purified
Host	Goat
Clonality	Polyclonal (goat origin)
Isotype	Goat Ig
Purity	Antigen affinity
Gene ID	6622
Applications	Western Blot : 0.1-1ug/ml ELISA (peptide) LOD : 1:32000
Limitations	This alpha-Synuclein antibody is available for research use only.



Western blot testing of human amygdala lysate with alpha-Synuclein antibody at 0.1ug/ml. Predicted molecular weight ~15 kDa.

Description

Additional name(s) for this target protein: Non A-beta component of AD amyloid; SNCA

Application Notes

Optimal dilution of the alpha-Synuclein antibody should be determined by the researcher.

1. This Ab detects the 140 amino acid isoform (NACP140).

Immunogen

Amino acids KDQLGKNEEGAPQE were used as the immunogen for this alpha-Synuclein antibody.

Storage

Aliquot and store the alpha-Synuclein antibody at -20oC.