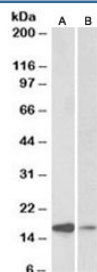


Alpha-Synuclein Antibody / SNCA (R33188)

Catalog No.	Formulation	Size
R33188-100UG	0.5 mg/ml in 1X TBS, pH7.3, with 0.5% BSA (US sourced) and 0.02% sodium azide	100 ug

[Bulk quote request](#)

Availability	1-3 business days
Species Reactivity	Human, Mouse
Predicted Reactivity	Rat, Dog, Pig
Format	Antigen affinity purified
Host	Goat
Clonality	Polyclonal (goat origin)
Isotype	Goat Ig
Purity	Antigen affinity
Gene ID	6622
Applications	Western Blot : 0.1-0.5ug/ml ELISA (peptide) LOD : 1:128000
Limitations	This alpha-Synuclein antibody is available for research use only.



Western blot testing of human amygdala [A] and fetal mouse [B] brain lysate with alpha-Synuclein antibody at 0.1ug/ml. Predicted molecular weight ~15 kDa.

Description

Additional name(s) for this target protein: SNCA

Application Notes

Optimal dilution of the alpha-Synuclein antibody should be determined by the researcher.

Immunogen

Amino acids ATGFVKKQQLGK were used as the immunogen for this alpha-Synuclein antibody.

Storage

Aliquot and store the alpha-Synuclein antibody at -20oC.