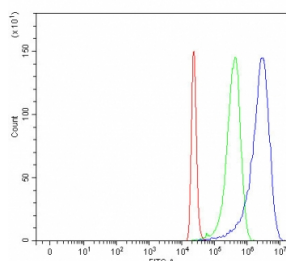


Alpha SNAP Antibody / NAPA / SNAPA (RQ8316)

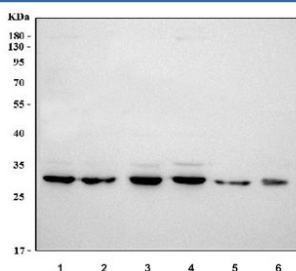
Catalog No.	Formulation	Size
RQ8316	0.5mg/ml if reconstituted with 0.2ml sterile DI water	100 ug

Bulk quote request

Availability	1-3 business days
Species Reactivity	Human
Format	Antigen affinity purified
Clonality	Polyclonal
Isotype	Rabbit IgG
Purity	Antigen affinity purified
Buffer	Lyophilized from 1X PBS with 2% Trehalose
UniProt	P54920
Applications	Western Blot : 0.5-1ug/ml Flow Cytometry : 1-3ug/million cells
Limitations	This Alpha SNAP antibody is available for research use only.



Flow cytometry testing of fixed and permeabilized human 293T cells with Alpha SNAP antibody at 1ug/million cells (blocked with goat sera); Red=cells alone, Green=isotype control, Blue= Alpha SNAP antibody.



Western blot testing of human 1) 293T, 2) MCF7, 3) A549, 4) K562, 5) ThP-1 and 6) PC-3 cell lysate with Alpha SNAP antibody. Predicted molecular weight ~33 kDa.

Description

N-ethylmaleimide-sensitive factor Attachment Protein Alpha, also known as SNAP-alpha, is a SNAP protein that is involved in the intra-cellular trafficking and fusing of vesicles to target membranes in cells. This gene encodes a member of the soluble NSF attachment protein (SNAP) family. SNAP proteins play a critical role in the docking and fusion of vesicles to target membranes as part of the 20S NSF-SNAP-SNARE complex. The encoded protein plays a role in the completion of membrane fusion by mediating the interaction of N-ethylmaleimide-sensitive factor (NSF) with the vesicle-associated and membrane-associated SNAP receptor (SNARE) complex, and stimulating the ATPase activity of NSF. Alternatively spliced transcript variants have been observed for this gene.

Application Notes

Optimal dilution of the Alpha SNAP antibody should be determined by the researcher.

Immunogen

Amino acids KEAEAMALLAEAERKVKNSQSFFC were used as the immunogen for the Alpha SNAP antibody.

Storage

After reconstitution, the Alpha SNAP antibody can be stored for up to one month at 4°C. For long-term, aliquot and store at -20°C. Avoid repeated freezing and thawing.