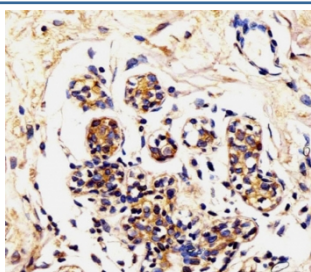


Alpha Lactalbumin Antibody / LALBA (F54239)

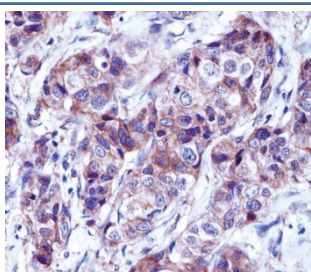
Catalog No.	Formulation	Size
F54239-0.4ML	In 1X PBS, pH 7.4, with 0.09% sodium azide	0.4 ml
F54239-0.08ML	In 1X PBS, pH 7.4, with 0.09% sodium azide	0.08 ml

[Bulk quote request](#)

Availability	1-3 business days
Species Reactivity	Human
Format	Purified
Host	Rabbit
Clonality	Polyclonal (rabbit origin)
Isotype	Rabbit Ig
Purity	Antigen affinity purified
UniProt	P00709
Gene ID	3906
Applications	Western Blot : 1:1000-1:2000 Immunohistochemistry (FFPE) : 1:25-1:50
Limitations	This Alpha Lactalbumin antibody is available for research use only.



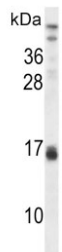
IHC testing of FFPE human breast tissue with Alpha Lactalbumin antibody. HIER: steam section in pH6 citrate buffer for 20 min and allow to cool prior to staining.



IHC testing of FFPE human breast carcinoma tissue with Alpha Lactalbumin antibody. HIER: steam section in pH6 citrate buffer for 20 min and allow to cool prior to staining.



Western blot testing of human breast tissue lysate with Alpha Lactalbumin antibody.
Predicted molecular weight ~16 kDa.



Western blot testing of human CEM cell lysate with Alpha Lactalbumin antibody.
Predicted molecular weight ~16 kDa.

Description

This gene encodes alpha-lactalbumin, a principal protein of milk. Alpha-lactalbumin forms the regulatory subunit of the lactose synthase (LS) heterodimer and beta 1,4-galactosyltransferase (beta4Gal-T1) forms the catalytic component. Together, these proteins enable LS to produce lactose by transferring galactose moieties to glucose. As a monomer, alpha-lactalbumin strongly binds calcium and zinc ions and may possess bactericidal or antitumor activity. A folding variant of alpha-lactalbumin, called HAMLET, likely induces apoptosis in tumor and immature cells.

Application Notes

The stated application concentrations are suggested starting points. Titration of the Alpha Lactalbumin antibody may be required due to differences in protocols and secondary/substrate sensitivity.

Immunogen

A portion of amino acids 39-68 from the human protein were used as the immunogen for the Alpha Lactalbumin antibody.

Storage

Aliquot the Alpha Lactalbumin antibody and store frozen at -20oC or colder. Avoid repeated freeze-thaw cycles.