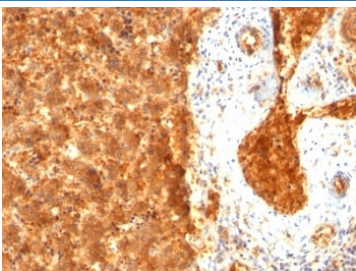


Alpha Fetoprotein Antibody [clone SPM334] (V9012)

Catalog No.	Formulation	Size
V9012-100UG	0.2 mg/ml in 1X PBS with 0.1 mg/ml BSA (US sourced) and 0.05% sodium azide	100 ug
V9012-20UG	0.2 mg/ml in 1X PBS with 0.1 mg/ml BSA (US sourced) and 0.05% sodium azide	20 ug
V9012SAF-100UG	1 mg/ml in 1X PBS; BSA free, sodium azide free	100 ug
V9012IHC-7ML	Prediluted in 1X PBS with 0.1 mg/ml BSA (US sourced) and 0.05% sodium azide; *For IHC use only*	7 ml

[Bulk quote request](#)

Availability	1-3 business days
Species Reactivity	Human
Format	Purified
Host	Mouse
Clonality	Monoclonal (mouse origin)
Isotype	Mouse IgG2a, kappa
Clone Name	SPM334
Purity	Protein G affinity chromatography
UniProt	P02771
Localization	Cytoplasmic
Applications	Immunohistochemistry (FFPE) : 1-2ug/ml for 30 min at RT
Limitations	This Alpha Fetoprotein antibody is available for research use only.



IHC: Formalin-fixed, paraffin-embedded human fetal liver stained with AFP antibody (SPM334).

Description

It recognizes an oncofetal glycoprotein with a single chain of 70kDa, which is identified as alpha fetoprotein (AFP). This mAb is highly specific to AFP and shows no cross-reaction with other oncofetal antigens or serum albumin. AFP is normally synthesized in the liver, intestinal tract, and yolk sac of the fetus. Antibody to AFP has been shown to be useful in detecting hepatocellular carcinomas (HCC) and germ cell neoplasms, especially yolk sac tumors.

This antibody can be compared with our [AFP Antibody cocktail](#) (clones C2 + C3 + MBS-12) for robust detection of alpha fetoprotein across multiple assay formats in tumor marker studies.

Application Notes

The optimal dilution of the Alpha Fetoprotein antibody for each application should be determined by the researcher.

1. Staining of formalin-fixed tissues requires boiling tissue sections in pH 9 10mM Tris with 1mM EDTA for 10-20 min followed by cooling at RT for 20 minutes.
2. The prediluted format is supplied in a dropper bottle and is optimized for use in IHC. After epitope retrieval step (if required), drip mAb solution onto the tissue section and incubate at RT for 30 min.

Immunogen

Alpha fetoprotein purified from serum of a hepatoma patient was used as the immunogen for this AFP antibody.

Storage

Store the Alpha Fetoprotein antibody at 2-8oC (with azide) or aliquot and store at -20oC or colder (without azide).