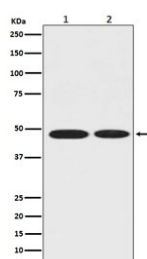


Alpha Enolase Antibody / ENO1 / Enolase 1 [clone AEA-5] (RQ5160)

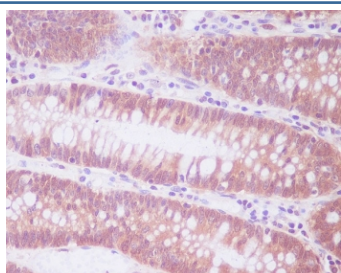
Catalog No.	Formulation	Size
RQ5160	Antibody in PBS with 0.02% sodium azide, 50% glycerol and 0.4-0.5mg/ml BSA	100 ul

[Bulk quote request](#)

Availability	1-2 weeks
Species Reactivity	Human, Rat
Format	Purified
Host	Rabbit
Clonality	Rabbit Monoclonal
Isotype	Rabbit IgG
Clone Name	AEA-5
Purity	Affinity purified
UniProt	P06733
Applications	Western Blot : 1:500-1:2000 Immunohistochemistry (FFPE) : 1:50-1:200
Limitations	This Alpha Enolase antibody is available for research use only.



Western blot testing of 1) human MCF7 and 2) rat brain lysate with Alpha Enolase antibody. Predicted molecular weight ~47 kDa.



IHC staining of FFPE human colon tissue with Alpha Enolase antibody. HIER: boil tissue sections in pH6, 10mM citrate buffer, for 10-20 min and allow to cool before testing.

Description

The ENO1 gene encodes alpha-enolase, one of three enolase isoenzymes found in mammals. Each isoenzyme is a homodimer composed of 2 alpha, 2 gamma, or 2 beta subunits, and functions as a glycolytic enzyme. Alpha-enolase in addition, functions as a structural lens protein (tau-crystallin) in the monomeric form. [RefSeq]

Application Notes

Optimal dilution of the Alpha Enolase antibody should be determined by the researcher.

Immunogen

A synthetic peptide specific to human Alpha Enolase / ENO1 was used as the immunogen for the Alpha Enolase antibody.

Storage

Store the Alpha Enolase antibody at -20oC.