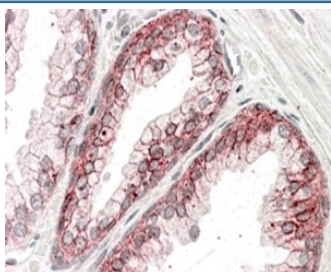


## Alpha Catenin Antibody (R34613)

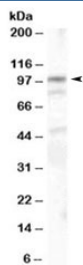
Catalog No.	Formulation	Size
R34613-100UG	0.5 mg/ml in 1X TBS, pH7.3, with 0.5% BSA (US sourced) and 0.02% sodium azide	100 ug

[Bulk quote request](#)

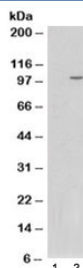
<b>Availability</b>	1-3 business days
<b>Species Reactivity</b>	Human
<b>Predicted Reactivity</b>	Mouse, Rat, Dog
<b>Format</b>	Antigen affinity purified
<b>Clonality</b>	Polyclonal (goat origin)
<b>Isotype</b>	Goat Ig
<b>Purity</b>	Antigen affinity
<b>Gene ID</b>	1495
<b>Localization</b>	Cell surface, cytoplasmic, cell junctions
<b>Applications</b>	Western Blot : 1-3ug/ml Immunohistochemistry (FFPE) : 3-6ug/ml ELISA (peptide) LOD : 1:32000
<b>Limitations</b>	This alpha Catenin antibody is available for research use only.



IHC staining of FFPE human prostate with alpha Catenin antibody at 3.8ug/ml. HIER: steamed with pH6 citrate buffer, AP-staining.



Western blot testing of human colon lysate with alpha Catenin antibody at 1ug/ml.  
Expected/observed molecular weight: ~102kDa.



Western blot of HEK293 lysate overexpressing human CTNNA1 probed with alpha Catenin antibody (mock transfection in lane 1). Expected/observed molecular weight: ~102kDa.

## Description

Additional name(s) for this target protein: Catenin (cadherin-associated protein), alpha 1; CTNNA1

## Application Notes

Optimal dilution of the alpha Catenin antibody should be determined by the researcher.

## Immunogen

Amino acids KREKQDETQTKIK were used as the immunogen for this alpha Catenin antibody.

## Storage

Aliquot and store the alpha Catenin antibody at -20oC.