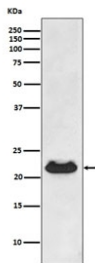


## Alpha B Crystallin Antibody / CRYAB [clone ABHC-3] (RQ4994)

Catalog No.	Formulation	Size
RQ4994	Antibody in PBS with 0.02% sodium azide, 50% glycerol and 0.4-0.5mg/ml BSA	100 ul

[Bulk quote request](#)

<b>Availability</b>	1-2 weeks
<b>Species Reactivity</b>	Human
<b>Format</b>	Purified
<b>Host</b>	Rabbit
<b>Clonality</b>	Rabbit Monoclonal
<b>Isotype</b>	Rabbit IgG
<b>Clone Name</b>	ABHC-3
<b>Purity</b>	Affinity purified
<b>UniProt</b>	P02511
<b>Applications</b>	Western Blot : 1:500-1:2000
<b>Limitations</b>	This Alpha B Crystallin antibody is available for research use only.



Alpha B Crystallin Antibody Fetal Heart WB. Western blot testing of human fetal heart lysate with Alpha B Crystallin antibody. Predicted molecular weight ~20 kDa.

### Description

Alpha B Crystallin Antibody detects CRYAB protein. Mammalian lens crystallins are divided into alpha, beta, and gamma families. Alpha crystallins are composed of two gene products: alpha-A and alpha-B, for acidic and basic, respectively. Alpha crystallins can be induced by heat shock and are members of the small heat shock protein (HSP20) family. They act as molecular chaperones although they do not renature proteins and release them in the fashion of a true chaperone; instead they hold them in large soluble aggregates. Post-translational modifications decrease the ability to chaperone. These heterogeneous aggregates consist of 30-40 subunits; the alpha-A and alpha-B subunits have a 3:1 ratio,

respectively. Two additional functions of alpha crystallins are an autokinase activity and participation in the intracellular architecture. The encoded protein has been identified as a moonlighting protein based on its ability to perform mechanistically distinct functions. Alpha-A and alpha-B gene products are differentially expressed; alpha-A is preferentially restricted to the lens and alpha-B is expressed widely in many tissues and organs. Elevated expression of alpha-B crystallin occurs in many neurological diseases; a missense mutation cosegregated in a family with a desmin-related myopathy. Alternative splicing results in multiple transcript variants.

For a microarray-validated reference CRYAB antibody with confirmed specificity, see [clone CRYAB/4657](#).

## Application Notes

Optimal dilution of the Alpha B Crystallin antibody should be determined by the researcher.

## Immunogen

A synthetic peptide specific to human CRYAB / Alpha B Crystallin was used as the immunogen for the Alpha B Crystallin antibody.

## Storage

Store the Alpha B Crystallin antibody at -20oC.