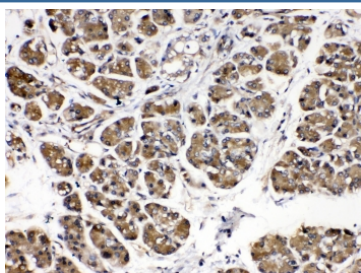


## Alpha Amylase Antibody (R32663)

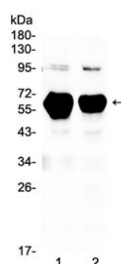
Catalog No.	Formulation	Size
R32663	0.5mg/ml if reconstituted with 0.2ml sterile DI water	100 ug

**Bulk quote request**

<b>Availability</b>	1-3 business days
<b>Species Reactivity</b>	Human, Mouse, Rat
<b>Format</b>	Antigen affinity purified
<b>Clonality</b>	Polyclonal (rabbit origin)
<b>Isotype</b>	Rabbit IgG
<b>Purity</b>	Antigen affinity
<b>Buffer</b>	Lyophilized from 1X PBS with 2.5% BSA, 0.025% sodium azide
<b>UniProt</b>	P04745
<b>Applications</b>	Western Blot : 0.5-1ug/ml IHC (FFPE) : 1-2ug/ml
<b>Limitations</b>	This Alpha Amylase antibody is available for research use only.



IHC testing of human pancreatic cancer tissue with Alpha Amylase antibody at 0.5ug/ml. Required HIER: steam section in pH6 citrate buffer for 20 min and allow to cool prior to testing.



Western blot testing of 1) rat pancreas and 2) mouse pancreas lysate with Alpha Amylase antibody at 0.5ug/ml. Predicted molecular weight ~58 kDa.

## Description

Amylase is an enzyme that catalyses the breakdown of starch into sugars. Amylase is present in human saliva, where it begins the chemical process of digestion. By in situ hybridization combined with high resolution cytogenetics, the amylase gene is mapped to 1p21. Amylase enzymes find use in bread making and to break down complex sugars such as starch (found in flour) into simple sugars. Yeast then feeds on these simple sugars and converts it into the waste products of alcohol and CO<sub>2</sub>.

## Application Notes

Optimal dilution of the Alpha Amylase antibody should be determined by the researcher.

## Immunogen

Amino acids 20-50 (NTQQGRTSIVHLFEWRWVDIALECERYLAPK) from the human protein were used as the immunogen for the Alpha Amylase antibody.

## Storage

After reconstitution, the Alpha Amylase antibody can be stored for up to one month at 4°C. For long-term, aliquot and store at -20°C. Avoid repeated freezing and thawing.