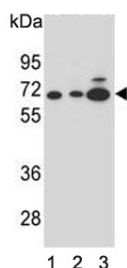


Alpha-amylase 2B Antibody / AMY2B (F54556)

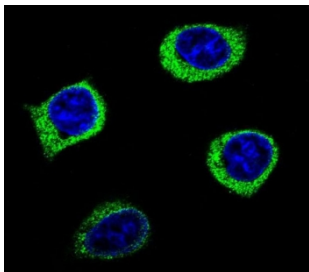
Catalog No.	Formulation	Size
F54556-0.4ML	In 1X PBS, pH 7.4, with 0.09% sodium azide	0.4 ml
F54556-0.08ML	In 1X PBS, pH 7.4, with 0.09% sodium azide	0.08 ml

[Bulk quote request](#)

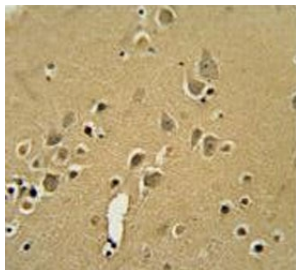
Availability	1-3 business days
Species Reactivity	Human
Format	Purified
Clonality	Polyclonal (rabbit origin)
Isotype	Rabbit Ig
Purity	Antigen affinity purified
UniProt	P19961
Localization	Cytoplasmic
Applications	Immunofluorescence : 1:25 Flow Cytometry : 1:25 (1x10e6 cells) Immunohistochemistry (FFPE) : 1:25 Western Blot : 1:500-1:2000
Limitations	This Alpha-amylase 2B antibody is available for research use only.



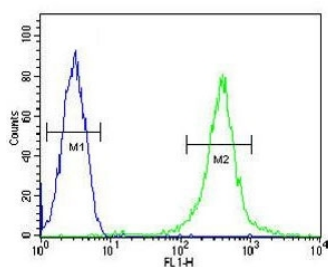
Western blot testing of human 1) HL60, 2) CEM and 3) K562 cell lysate with Alpha-amylase 2B antibody. Predicted molecular weight ~57 kDa.



Immunofluorescent staining of human HEK293 cells with Alpha-amylase 2B antibody (green) and DAPI nuclear stain (blue).



IHC testing of FFPE human brain tissue with Alpha-amylase 2B antibody. HIER: steam section in pH6 citrate buffer for 20 min and allow to cool prior to staining.



Flow cytometry testing of human CEM cells with Alpha-amylase 2B antibody; Blue=isotype control, Green= Alpha-amylase 2B antibody.

Description

Amylases are secreted proteins that hydrolyze 1,4-alpha-glucoside bonds in oligosaccharides and polysaccharides, and thus catalyze the first step in digestion of dietary starch and glycogen. The human genome has a cluster of several amylase genes that are expressed at high levels in either salivary gland or pancreas. This gene encodes an amylase isoenzyme produced by the pancreas.

Application Notes

The stated application concentrations are suggested starting points. Titration of the Alpha-amylase 2B antibody may be required due to differences in protocols and secondary/substrate sensitivity.

Immunogen

A portion of amino acids 74-100 from the human protein was used as the immunogen for the Alpha-amylase 2B antibody.

Storage

Aliquot the Alpha-amylase 2B antibody and store frozen at -20oC or colder. Avoid repeated freeze-thaw cycles.

