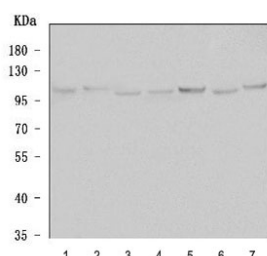


Alpha-Adaptin Antibody / AP2A1 [clone 100/2] (R30093)

Catalog No.	Formulation	Size
R30093	0.5mg/ml with 1% BSA and 0.01% sodium azide if reconstituted with 0.2ml sterile 1X PBS	100 ug

[Bulk quote request](#)

Availability	1-3 business days
Species Reactivity	Human, Mouse, Rat
Format	Ascites
Host	Mouse
Clonality	Monoclonal (mouse origin)
Isotype	Mouse IgG2a
Clone Name	100/2
Purity	Ascites
UniProt	O95782
Gene ID	160
Applications	Western Blot : 1-2ug/ml
Limitations	This Alpha-Adaptin antibody is available for research use only.



Western blot testing of 1) human SH-SY5Y, 2) human U-87 MG, 3) human MCF7, 4) human 293T, 5) rat brain, 6) rat C6 and 7) mouse brain tissue lysate with Alpha-Adaptin antibody. Predicted molecular weight ~108 kDa.

Description

Alpha Adaptin, also known as adaptor related protein complex, alpha 1 subunit. The alpha adaptins are exclusively found in the endocytic coated vesicles. Huntingtin-interacting protein 1(HIP1) is enriched in membrane-containing cell fractions and has been implicated in vesicle trafficking. Waelter et al. (2001) identified 3 HIP1-associated proteins, clathrin heavy chain (CLTC) and alpha-adaptin A and C. Coat proteins of approximately 100-kD (adaptins) are components of the

adaptor complexes which link clathrin to receptors in coated vesicles. The alpha-adaptins separate into two bands on SDS gels.

Application Notes

The stated application concentrations are suggested starting amounts. Titration of the Alpha-Adaptin antibody may be required due to differences in protocols and secondary/substrate sensitivity.

Immunogen

AP-2 adaptor polypeptides from bovine brain was used as the immunogen for this Alpha-Adaptin antibody.

Storage

After reconstitution, the Alpha-Adaptin antibody can be stored for up to one month at 4oC. For long-term, aliquot and store at -20oC. Avoid repeated freezing and thawing.