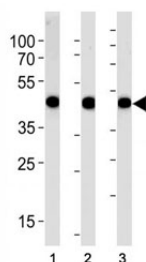


Alpha Actin Antibody (F44155)

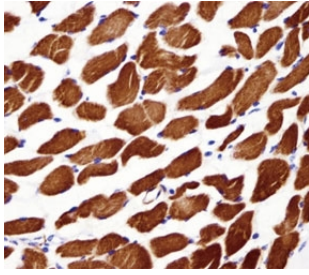
Catalog No.	Formulation	Size
F44155-0.4ML	In 1X PBS, pH 7.4, with 0.09% sodium azide	0.4 ml
F44155-0.08ML	In 1X PBS, pH 7.4, with 0.09% sodium azide	0.08

[Bulk quote request](#)

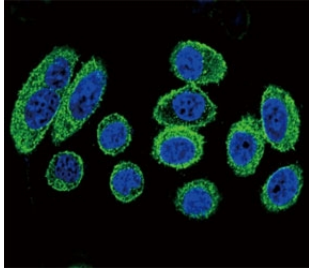
Availability	1-3 business days
Species Reactivity	Human
Predicted Reactivity	Bovine, Chicken, Mouse, Pig, Rabbit, Rat, Xenopus
Format	Antigen affinity purified
Host	Rabbit
Clonality	Polyclonal (rabbit origin)
Isotype	Rabbit Ig
Purity	Antigen affinity
UniProt	P68133
Applications	Western Blot : 1:1000 IHC (Paraffin) : 1:10-1:50 Immunofluorescence : 1:10-1:50 Flow Cytometry : 1:10-1:50
Limitations	This alpha Actin antibody is available for research use only.



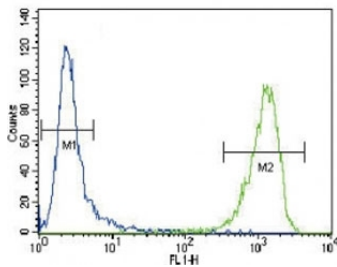
Alpha Actin antibody western blot analysis in (1) A549, (2) RD, and (3) human placenta lysate



Alpha Actin antibody immunohistochemistry analysis in formalin fixed and paraffin embedded human skeletal muscle



Confocal immunofluorescent analysis of alpha Actin antibody with A549 cells followed by Alexa Fluor 488-conjugated goat anti-rabbit IgG (green). DAPI was used as a nuclear counterstain (blue).



Alpha Actin antibody flow cytometric analysis of CEM cells (green) compared to a [negative control](#) (blue).

Description

The product encoded by this gene belongs to the actin family of proteins, which are highly conserved proteins that play a role in cell motility, structure and integrity. Alpha, beta and gamma actin isoforms have been identified, with α -actins being a major constituent of the contractile apparatus, while beta and gamma actins are involved in the regulation of cell motility. This actin is an α -actin that is found in skeletal muscle. Mutations in this gene cause nemaline myopathy type 3, congenital myopathy with excess of thin myofilaments, congenital myopathy with cores, and congenital myopathy with fiber-type disproportion, diseases that lead to muscle fiber defects.

Application Notes

The stated application concentrations are suggested starting amounts. Titration of the alpha Actin antibody may be required due to differences in protocols and secondary/substrate sensitivity.

Immunogen

A portion of amino acids 346-375 from human ACTA1 was used as the immunogen for this alpha Actin antibody.

Storage

Aliquot the alpha Actin antibody and store frozen at -20°C or colder. Avoid repeated freeze-thaw cycles.

