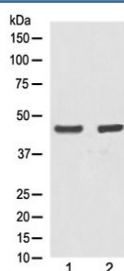


Alpha Actin Antibody / ACATA1 [clone C-1] (RQ4494)

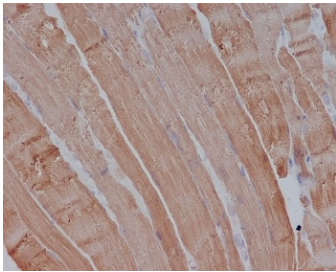
Catalog No.	Formulation	Size
RQ4494	Antibody in PBS with 0.02% sodium azide, 50% glycerol and 0.4-0.5mg/ml BSA	100 ul

[Bulk quote request](#)

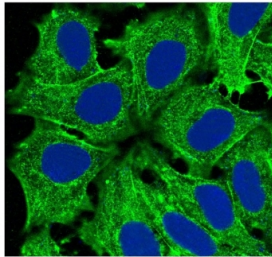
Availability	1-2 weeks
Species Reactivity	Human, Mouse
Format	Purified
Host	Rabbit
Clonality	Rabbit Monoclonal
Isotype	Rabbit IgG
Clone Name	C-1
Purity	Protein A affinity
UniProt	P68133
Localization	Cytoplasm, cytoskeleton
Applications	Western Blot : 1:500-1:2000 Immunohistochemistry (FFPE) : 1:50-1:200 Immunofluorescence : 1:50-1:200
Limitations	This Alpha Actin antibody is available for research use only.



Western blot testing of human 1) A431 and 2) MCF7 lysate with Alpha Actin antibody at 0.5ug/ml. Expected molecular weight: 42-45 kDa.



IHC testing of FFPE mouse muscle with Alpha Actin antibody at 2ug/ml. HIER: boil tissue sections in pH6, 10mM citrate buffer, for 10-20 min followed by cooling at RT for 20 min.



Immunofluorescent staining of human HeLa cells with Alpha Actin antibody (green) and DAPI nuclear stain (blue).

Description

Actins are highly conserved proteins that are involved in various types of cell motility and are ubiquitously expressed in all eukaryotic cells.

Application Notes

Optimal dilution of the Alpha Actin antibody should be determined by the researcher.

Immunogen

A synthetic peptide from human Alpha Actin was used as the immunogen for the Alpha Actin antibody.

Storage

Store the Alpha Actin antibody at -20oC.