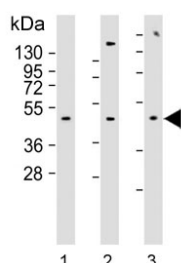


## Alpha-2B Adrenergic Receptor Antibody / ADRA2B (F54979)

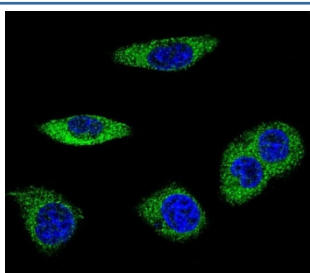
Catalog No.	Formulation	Size
F54979-0.4ML	In 1X PBS, pH 7.4, with 0.09% sodium azide	0.4 ml
F54979-0.08ML	In 1X PBS, pH 7.4, with 0.09% sodium azide	0.08 ml

[Bulk quote request](#)

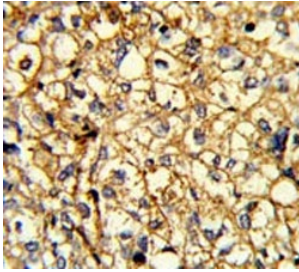
<b>Availability</b>	1-3 business days
<b>Species Reactivity</b>	Human
<b>Format</b>	Purified
<b>Clonality</b>	Polyclonal (rabbit origin)
<b>Isotype</b>	Rabbit IgG
<b>Purity</b>	Antigen affinity purified
<b>UniProt</b>	P18089
<b>Applications</b>	Western Blot : 1:500-1:1000 Immunofluorescence : 1:10-1:50 Flow Cytometry : 1:10-1:50 (1x10 <sup>6</sup> cells) Immunohistochemistry (FFPE) : 1:50-1:100
<b>Limitations</b>	This Alpha-2B Adrenergic Receptor antibody is available for research use only.



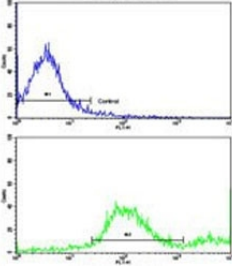
Western blot testing of human 1) MCF7, 2) MDA-MB-231 and 3) SK-BR-3 cell lysate with Alpha-2B Adrenergic Receptor antibody. Predicted molecular weight ~50 kDa.



Immunofluorescent staining of fixed human MDA-MB-231 cells with Alpha-2B Adrenergic Receptor antibody (green) and DAPI nuclear stain (blue).



IHC testing of FFPE human breast cancer tissue with Alpha-2B Adrenergic Receptor antibody. HIER: steam section in pH6 citrate buffer for 20 min and allow to cool prior to staining.



Flow cytometry testing of human MDA-MB-231 cells with Alpha-2B Adrenergic Receptor antibody; Blue=isotype control, Green= Alpha-2B Adrenergic Receptor antibody.

## Description

Alpha-2-adrenergic receptors are members of the G protein-coupled receptor superfamily. They include 3 highly homologous subtypes: alpha2A, alpha2B, and alpha2C. These receptors have a critical role in regulating neurotransmitter release from sympathetic nerves and from adrenergic neurons in the central nervous system. Alpha 2B adrenergic receptor subtype was observed to associate with eIF-2B, a guanine nucleotide exchange protein that functions in regulation of translation. A polymorphic variant of the alpha2B subtype, which lacks 3 glutamic acids from a glutamic acid repeat element, was identified to have decreased G protein-coupled receptor kinase-mediated phosphorylation and desensitization; this polymorphic form is also associated with reduced basal metabolic rate in obese subjects and may therefore contribute to the pathogenesis of obesity. Alpha 2B adrenergic receptor gene contains no introns in either its coding or untranslated sequences.

## Application Notes

The stated application concentrations are suggested starting points. Titration of the Alpha-2B Adrenergic Receptor antibody may be required due to differences in protocols and secondary/substrate sensitivity.

## Immunogen

A portion of amino acids 343-369 from the human protein was used as the immunogen for the Alpha-2B Adrenergic Receptor antibody.

## Storage

Aliquot the Alpha-2B Adrenergic Receptor antibody and store frozen at -20oC or colder. Avoid repeated freeze-thaw cycles.

