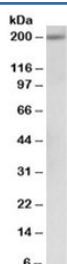


## Alpha-2-macroglobulin Antibody (R36290)

Catalog No.	Formulation	Size
R36290-100UG	0.5 mg/ml in 1X TBS, pH7.3, with 0.5% BSA (US sourced) and 0.02% sodium azide	100 ug

[Bulk quote request](#)

Availability	1-3 business days
Species Reactivity	Human
Format	Antigen affinity purified
Clonality	Polyclonal (goat origin)
Isotype	Goat Ig
Purity	Antigen affinity
Gene ID	2
Applications	Western Blot : 0.5-1.5ug/ml ELISA (peptide) LOD : 1:32000
Limitations	This alpha-2-macroglobulin antibody is available for research use only.



Western blot testing of human albumin-depleted serum lysate with alpha-2-macroglobulin antibody at 0.5ug/ml. Predicted molecular weight: ~163/200kDa (unmodified/glycosylated).

### Description

Additional name(s) for this target protein: A2M; A2MD

### Application Notes

Optimal dilution of the alpha-2-macroglobulin antibody should be determined by the researcher.

### Immunogen

Amino acids TSLTVRVNYKDRSP were used as the immunogen for this alpha-2-macroglobulin antibody.

## Storage

Aliquot and store the alpha-2-macroglobulin antibody at -20oC.