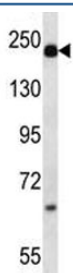


## Alpha-2-macroglobulin Antibody (F44165)

Catalog No.	Formulation	Size
F44165-0.4ML	In 1X PBS, pH 7.4, with 0.09% sodium azide	0.4 ml
F44165-0.08ML	In 1X PBS, pH 7.4, with 0.09% sodium azide	0.08 ml

[Bulk quote request](#)

<b>Availability</b>	1-3 business days
<b>Species Reactivity</b>	Human, Mouse
<b>Predicted Reactivity</b>	Bovine
<b>Format</b>	Antigen affinity purified
<b>Clonality</b>	Polyclonal (rabbit origin)
<b>Isotype</b>	Rabbit Ig
<b>Purity</b>	Antigen affinity
<b>UniProt</b>	P01023
<b>Applications</b>	Western Blot : 1:1000
<b>Limitations</b>	This Alpha-2-macroglobulin antibody is available for research use only.



Alpha-2-macroglobulin antibody western blot analysis in mouse plasma lysate. Predicted molecular weight: ~163/200kDa (unmodified/glycosylated).

## Description

Alpha-2-macroglobulin is a protease inhibitor and cytokine transporter. It inhibits many proteases, including trypsin, thrombin and collagenase. A2M is implicated in Alzheimer disease (AD) due to its ability to mediate the clearance and degradation of A-beta, the major component of beta-amyloid deposits. [provided by RefSeq].

## Application Notes

Titration of the Alpha-2-macroglobulin antibody may be required due to differences in protocols and secondary/substrate sensitivity.

## **Immunogen**

A portion of amino acids 93-120 from the human protein was used as the immunogen for this Alpha-2-macroglobulin antibody.

## **Storage**

Aliquot the Alpha-2-macroglobulin antibody and store frozen at -20oC or colder. Avoid repeated freeze-thaw cycles.