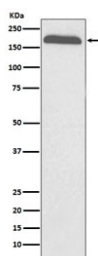


Alpha-2-macroglobulin Antibody / A2M [clone ABAO-1] (RQ4853)

Catalog No.	Formulation	Size
RQ4853	Antibody in PBS with 0.02% sodium azide, 50% glycerol and 0.4-0.5mg/ml BSA	100 ul

[Bulk quote request](#)

Availability	1-2 weeks
Species Reactivity	Human
Format	Purified
Host	Rabbit
Clonality	Rabbit Monoclonal
Isotype	Rabbit IgG
Clone Name	ABAO-1
Purity	Affinity purified
UniProt	P01023
Applications	Western Blot : 1:500-1:2000
Limitations	This Alpha-2-macroglobulin antibody is available for research use only.



Western blot testing of human plasma lysate with Alpha-2-macroglobulin antibody. Expected molecular weight: 163-200 kDa depending on the level of glycosylation.

Description

Alpha-2-macroglobulin is a protease inhibitor and cytokine transporter. It uses a bait-and-trap mechanism to inhibit a broad spectrum of proteases, including trypsin, thrombin and collagenase. It can also inhibit inflammatory cytokines, and it thus disrupts inflammatory cascades. Mutations in this gene are a cause of alpha-2-macroglobulin deficiency. This gene is implicated in Alzheimer's disease (AD) due to its ability to mediate the clearance and degradation of A-beta, the major component of beta-amyloid deposits. [RefSeq]

Application Notes

Optimal dilution of the Alpha-2-macroglobulin antibody should be determined by the researcher.

Immunogen

A synthetic peptide specific to human A2M / Alpha 2 Macroglobulin was used as the immunogen for the Alpha-2-macroglobulin antibody.

Storage

Store the Alpha-2-macroglobulin antibody at -20oC.