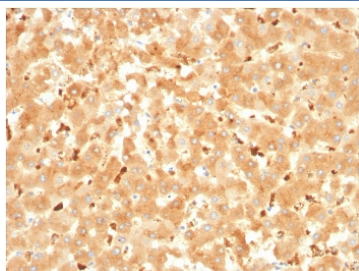


Alpha-2-Macroglobulin Antibody / A2M [clone A2M/3621] (V8506)

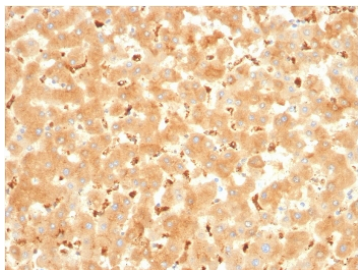
Catalog No.	Formulation	Size
V8506-100UG	0.2 mg/ml in 1X PBS with 0.1 mg/ml BSA (US sourced) and 0.05% sodium azide	100 ug
V8506-20UG	0.2 mg/ml in 1X PBS with 0.1 mg/ml BSA (US sourced) and 0.05% sodium azide	20 ug
V8506SAF-100UG	1 mg/ml in 1X PBS; BSA free, sodium azide free	100 ug

[Bulk quote request](#)

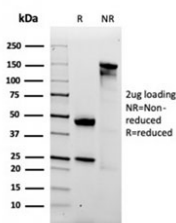
Availability	1-3 business days
Species Reactivity	Human
Format	Purified
Host	Mouse
Clonality	Monoclonal (mouse origin)
Isotype	Mouse IgG2c, kappa
Clone Name	A2M/3621
Purity	Protein G affinity chromatography
UniProt	P01023
Localization	Secreted
Applications	Immunohistochemistry (FFPE) : 1-2ug/ml for 30 minutes at RT
Limitations	This Alpha-2-Macroglobulin antibody is available for research use only.



IHC staining of FFPE human liver with Alpha-2-Macroglobulin antibody. HIER: boil tissue sections in pH 9 10mM Tris with 1mM EDTA for 20 min and allow to cool before testing.



IHC staining of FFPE human liver with Alpha-2-Macroglobulin antibody. HIER: boil tissue sections in pH 9 10mM Tris with 1mM EDTA for 20 min and allow to cool before testing.



SDS-PAGE analysis of purified, BSA-free Alpha-2-Macroglobulin antibody as confirmation of integrity and purity.

Description

Alpha-2-Macroglobulin (A2M) is a homotetrameric serum protein consisting of four identical subunits that form dimers through disulfide bonds. Initially, it was characterized as a pan-proteinase inhibitor that was able to bait proteinases into cleaving specific peptide sequences on A2M. This interaction induces a conformational change, thus enabling it to trap the proteinase and further inhibit its activity. Subsequently, A2M has been shown to function as a carrier protein and regulator of cytokines during inflammation.

Application Notes

Optimal dilution of the Alpha-2-Macroglobulin antibody should be determined by the researcher.

Immunogen

A portion of amino acids 604-748 from the human protein was used as the immunogen for the Alpha-2-Macroglobulin antibody.

Storage

Store the Alpha-2-Macroglobulin antibody at 2-8°C (with azide) or aliquot and store at -20°C or colder (without azide).