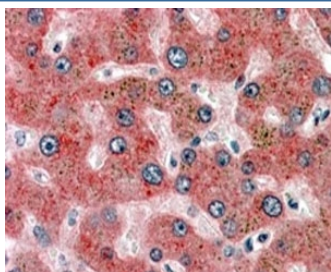


Alpha-2-Antiplasmin Antibody (R34371)

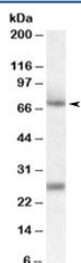
Catalog No.	Formulation	Size
R34371-100UG	0.5 mg/ml in 1X TBS, pH7.3, with 0.5% BSA (US sourced) and 0.02% sodium azide	100 ug

[Bulk quote request](#)

Availability	1-3 business days
Species Reactivity	Human
Format	Antigen affinity purified
Host	Goat
Clonality	Polyclonal (goat origin)
Isotype	Goat Ig
Purity	Antigen affinity
Gene ID	5345
Applications	Western Blot : 0.1-0.3ug/ml Immunohistochemistry (FFPE) : 3-5ug/ml Enzyme ImmunoAssay : binds recombinant protein ELISA (peptide) LOD : 1:16000
Limitations	This Alpha-2-Antiplasmin antibody is available for research use only.



IHC staining of FFPE human liver with alpha-2-Antiplasmin antibody at 4ug/ml. HIER: steamed with pH6 citrate buffer, AP-staining.



Western blot testing of human duodenum lysate with alpha-2-Antiplasmin antibody at 0.1ug/ml. Predicted molecular weight: ~55kDa/70 (unmodified/glycosylated). Both observed bands are blocked by the immunizing peptide.

Description

Additional name(s) for this target protein: Serpin peptidase inhibitor, clade F, member 2; A2AP, AAP, ALPHA-2-PI, API, PLI ; SERPINF2

Application Notes

Optimal dilution of the alpha-2-Antiplasmin antibody should be determined by the researcher.

Immunogen

Amino acids KDFLQSLKGFPRGDK were used as the immunogen for this alpha-2-Antiplasmin antibody.

Storage

Aliquot and store the alpha-2-Antiplasmin antibody at -20oC.