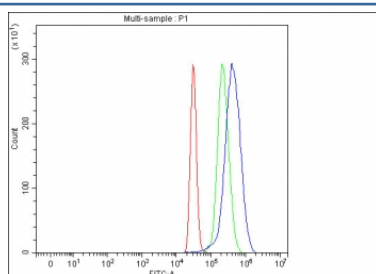


## Alpha 1B-Glycoprotein Antibody / A1BG (RQ8488)

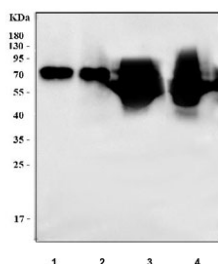
Catalog No.	Formulation	Size
RQ8488	0.5mg/ml if reconstituted with 0.2ml sterile DI water	100 ug

**Bulk quote request**

<b>Availability</b>	1-3 days
<b>Species Reactivity</b>	Human, Mouse, Rat
<b>Format</b>	Antigen affinity purified
<b>Clonality</b>	Polyclonal (rabbit origin)
<b>Isotype</b>	Rabbit IgG
<b>Purity</b>	Antigen affinity purified
<b>Buffer</b>	Lyophilized from 1X PBS with 2% Trehalose
<b>UniProt</b>	P04217
<b>Applications</b>	Western Blot : 0.5-1ug/ml Flow Cytometry : 1-3ug/million cells ELISA : 0.1-0.5ug/ml
<b>Limitations</b>	This Alpha 1B-Glycoprotein antibody is available for research use only.



Flow cytometry testing of fixed and permeabilized human HepG2 cells with Alpha 1B-Glycoprotein antibody at 1ug/million cells (blocked with goat sera); Red=cells alone, Green=isotype control, Blue= Alpha 1B-Glycoprotein antibody.



Western blot testing of 1) human HCCT, 2) human HCCP, 3) rat plasma and 4) mouse plasma lysate with Alpha 1B-Glycoprotein antibody. Predicted molecular weight ~54 kDa but may be observed at higher molecular weights due to glycosylation.

## Description

Alpha-1-B glycoprotein is a 54.3 kDa protein in humans that is encoded by the A1BG gene. The protein encoded by this gene is a plasma glycoprotein of unknown function. The protein shows sequence similarity to the variable regions of some immunoglobulin supergene family member proteins.

## Application Notes

Optimal dilution of the Alpha 1B-Glycoprotein antibody should be determined by the researcher.

## Immunogen

An E.coli-derived human recombinant protein (amino acids D429-S495) was used as the immunogen for the Alpha 1B-Glycoprotein antibody.

## Storage

After reconstitution, the Alpha 1B-Glycoprotein antibody can be stored for up to one month at 4oC. For long-term, aliquot and store at -20oC. Avoid repeated freezing and thawing.