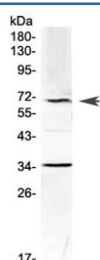


## Alpha 1 Fetoprotein Antibody / AFP (RQ4030)

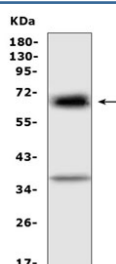
Catalog No.	Formulation	Size
RQ4030	0.5mg/ml if reconstituted with 0.2ml sterile DI water	100 ug

**Bulk quote request**

<b>Availability</b>	1-3 business days
<b>Species Reactivity</b>	Mouse, Rat
<b>Format</b>	Antigen affinity purified
<b>Host</b>	Rabbit
<b>Clonality</b>	Polyclonal (rabbit origin)
<b>Isotype</b>	Rabbit IgG
<b>Purity</b>	Antigen affinity purified
<b>Buffer</b>	Lyophilized from 1X PBS with 2% Trehalose
<b>UniProt</b>	P02772
<b>Applications</b>	Western Blot : 0.5-1ug/ml Direct ELISA : 0.1-0.5ug/ml
<b>Limitations</b>	This Alpha 1 Fetoprotein antibody is available for research use only.



Western blot testing of mouse HEPA1-6 cell lysate with Alpha 1 Fetoprotein antibody at 0.5ug/ml. Predicted molecular weight ~67 kDa.



Western blot testing of rat RH35 cell lysate with Alpha 1 Fetoprotein antibody at 0.5ug/ml. Predicted molecular weight ~67 kDa.

## Description

AFP, also called Alpha-fetoprotein, is a protein that in humans is encoded by the AFP gene. It is mapped to 4q13.3. The level of AFP in amniotic fluid is used to measure renal loss of protein to screen for spina bifida and anencephaly. In rodents AFP binds estradiol to prevent the transport of this hormone across the placenta to the fetus. The main function of this is to prevent the virilization of female fetuses. Moreover, it has an important role as a diagnostic marker, especially in certain tumors and liver diseases of childhood. AFP is also used to test the potential usefulness of plasma alpha fetoprotein determination as a diagnostic marker in biliary atresia, hepatitis, and yolk sac derived tumours.

## Application Notes

Optimal dilution of the Alpha 1 Fetoprotein antibody should be determined by the researcher.

## Immunogen

A recombinant mouse partial protein corresponding to amino acids K19-L254 was used as the immunogen for the Alpha 1 Fetoprotein antibody.

## Storage

After reconstitution, the Alpha 1 Fetoprotein antibody can be stored for up to one month at 4oC. For long-term, aliquot and store at -20oC. Avoid repeated freezing and thawing.