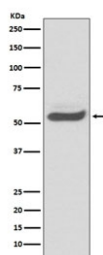


Alpha 1 Antitrypsin Antibody / SERPINA1 / AAT [clone AOEF-19] (RQ4850)

Catalog No.	Formulation	Size
RQ4850	Antibody in PBS with 0.02% sodium azide, 50% glycerol and 0.4-0.5mg/ml BSA	100 ul

[Bulk quote request](#)

Availability	1-2 weeks
Species Reactivity	Human
Format	Purified
Clonality	Rabbit Monoclonal
Isotype	Rabbit IgG
Clone Name	AOEF-19
Purity	Affinity purified
UniProt	P01009
Applications	Western Blot : 1:500-1:2000
Limitations	This Alpha 1 Antitrypsin antibody is available for research use only.



Western blot testing of human fetal kidney lysate with Alpha 1 Antitrypsin antibody.
Expected molecular weight: 47-52 kDa depending on the level of glycosylation.

Description

Alpha 1 Antitrypsin is an inhibitor of serine proteases. Its primary target is elastase, but it also has a moderate affinity for plasmin and thrombin. Irreversibly inhibits trypsin, chymotrypsin and plasminogen activator. The aberrant form inhibits insulin-induced NO synthesis in platelets, decreases coagulation time and has proteolytic activity against insulin and plasmin. [UniProt]

Application Notes

Optimal dilution of the Alpha 1 Antitrypsin antibody should be determined by the researcher.

Immunogen

A synthetic peptide specific to human SERPINA1 / Alpha 1 Antitrypsin was used as the immunogen for the Alpha 1 Antitrypsin antibody.

Storage

Store the Alpha 1 Antitrypsin antibody at -20oC.