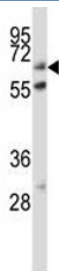


## ALP Antibody (placental) (F43061)

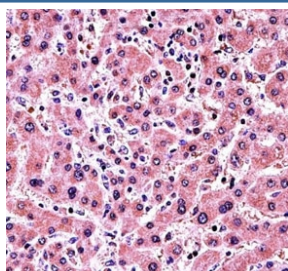
Catalog No.	Formulation	Size
F43061-0.4ML	In 1X PBS, pH 7.4, with 0.09% sodium azide	0.4 ml
F43061-0.08ML	In 1X PBS, pH 7.4, with 0.09% sodium azide	0.08 ml

[Bulk quote request](#)

<b>Availability</b>	1-3 business days
<b>Species Reactivity</b>	Human
<b>Format</b>	Antigen affinity purified
<b>Clonality</b>	Polyclonal (rabbit origin)
<b>Isotype</b>	Rabbit Ig
<b>Purity</b>	Antigen affinity
<b>UniProt</b>	P05187
<b>Applications</b>	Western Blot : 1:1000 IHC (Paraffin) : 1:10-1:50
<b>Limitations</b>	This ALP antibody is available for research use only.



ALP antibody western blot analysis in HeLa lysate



ALP antibody immunohistochemistry analysis in formalin fixed and paraffin embedded human liver tissue.

## Description

There are at least four distinct but related alkaline phosphatases: intestinal, placental, placental-like, and liver/bone/kidney (tissue non-specific). Placental ALP is a membrane bound glycosylated enzyme, also referred to as the heat stable form, that is expressed primarily in the placenta although it is closely related to the intestinal form of the enzyme as well as to the placental-like form.

## Application Notes

Titration of the ALP antibody may be required due to differences in protocols and secondary/substrate sensitivity.

## Immunogen

A portion of amino acids 282-309 from human placental alkaline phosphatase was used as the immunogen for this ALP antibody.

## Storage

Aliquot the ALP antibody and store frozen at -20oC or colder. Avoid repeated freeze-thaw cycles.