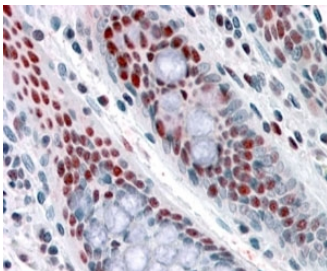


ALP Antibody / NAT10 (R34641)

| Catalog No. | Formulation | Size |
|--------------|---|--------|
| R34641-100UG | 0.5 mg/ml in 1X TBS, pH7.3, with 0.5% BSA (US sourced) and 0.02% sodium azide | 100 ug |

[Bulk quote request](#)

| | |
|-----------------------------|---|
| Availability | 1-3 business days |
| Species Reactivity | Human |
| Predicted Reactivity | Mouse, Rat, Dog |
| Format | Antigen affinity purified |
| Host | Goat |
| Clonality | Polyclonal (goat origin) |
| Isotype | Goat Ig |
| Purity | Antigen affinity |
| Gene ID | 55226 |
| Localization | Nuclear |
| Applications | Immunohistochemistry (FFPE) : 3-6ug/ml ELISA (peptide) LOD : 1:64000 |
| Limitations | This ALP antibody is available for research use only. |



IHC testing of FFPE human colon with ALP antibody at 4ug/ml. HIER: steamed with pH6 citrate buffer, AP-staining.

Description

Additional name(s) for this target protein: Acetyltransferase-like protein, N-acetyltransferase 10; NAT10

Application Notes

Optimal dilution of the ALP antibody should be determined by the researcher.

Immunogen

Amino acids KSDKKRKLEAKQ were used as the immunogen for this ALP antibody.

Storage

Aliquot and store the ALP antibody at -20oC.