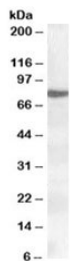


ALOX15 Antibody (R34327)

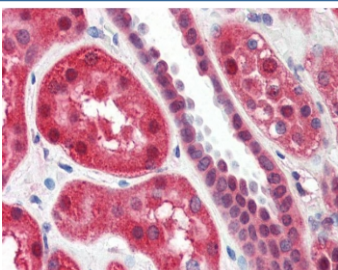
Catalog No.	Formulation	Size
R34327-100UG	0.5 mg/ml in 1X TBS, pH7.3, with 0.5% BSA (US sourced) and 0.02% sodium azide	100 ug

[Bulk quote request](#)

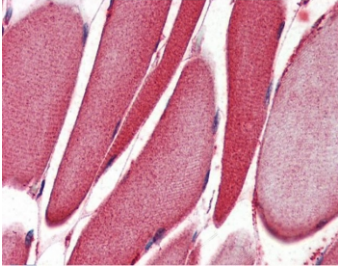
Availability	1-3 business days
Species Reactivity	Human
Format	Antigen affinity purified
Clonality	Polyclonal (goat origin)
Isotype	Goat Ig
Purity	Antigen affinity
Gene ID	246
Localization	Cytoplasmic
Applications	Western Blot : 0.2-0.5ug/ml IHC (FFPE) : 2ug/ml ELISA (peptide) LOD : 1:32000
Limitations	This ALOX15 antibody is available for research use only.



Western blot testing of nuclear HeLa lysate with ALOX15 antibody at 0.2ug/ml. Predicted molecular weight: ~75 kDa.



IHC testing of FFPE human kidney tissue with ALOX15 antibody at 2ug/ml. Required HIER: steamed antigen retrieval with pH6 citrate buffer; AP-staining.



IHC testing of FFPE human skeletal muscle tissue with ALOX15 antibody at 2ug/ml.
Required HIER: steamed antigen retrieval with pH6 citrate buffer; AP-staining.

Description

Additional name(s) for this target protein: Arachidonate 15-lipoxygenase

Application Notes

Optimal dilution of the ALOX15 antibody should be determined by the researcher.

Immunogen

Amino acids HYKTDVAVKDDPE were used as the immunogen for this ALOX15 antibody.

Storage

Aliquot and store the ALOX15 antibody at -20oC.