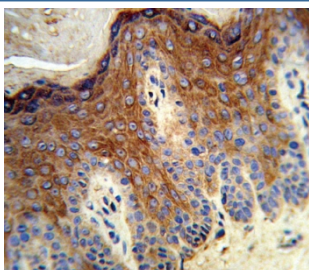


ALOX12 Antibody (F54466)

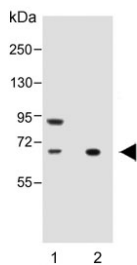
Catalog No.	Formulation	Size
F54466-0.4ML	In 1X PBS, pH 7.4, with 0.09% sodium azide	0.4 ml
F54466-0.08ML	In 1X PBS, pH 7.4, with 0.09% sodium azide	0.08 ml

[Bulk quote request](#)

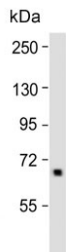
Availability	1-3 business days
Species Reactivity	Human, Mouse, Rat
Format	Purified
Clonality	Polyclonal (rabbit origin)
Isotype	Rabbit Ig
Purity	Antigen affinity purified
UniProt	P18054
Localization	Cytoplasmic
Applications	Western Blot : 1:500-1:2000 Immunofluorescence : 1:25 Flow Cytometry : 1:25 (1x10e6 cells) Immunohistochemistry (FFPE) : 1:25
Limitations	This ALOX12 antibody is available for research use only.



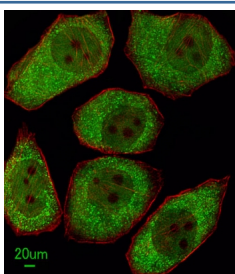
IHC testing of FFPE human skin tissue with ALOX12 antibody. HIER: steam section in pH6 citrate buffer for 20 min and allow to cool prior to staining.



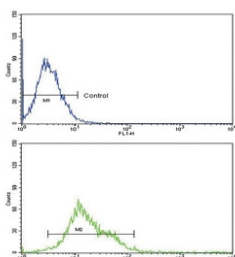
Western blot testing of 1) human HeLa and 2) rat spleen lysate with ALOX12 antibody. Predicted molecular weight ~76 kDa.



Western blot testing of mouse lung lysate with ALOX12 antibody. Predicted molecular weight ~76 kDa.



Immunofluorescent staining of human A549 cells with ALOX12 antibody (green) and anti-Actin (red).



Flow cytometry testing of human K562 cells with ALOX12 antibody; Blue=isotype control, Green= ALOX12 antibody.

Description

Oxygenase and 14,15-leukotriene A4 synthase activity.

Application Notes

The stated application concentrations are suggested starting points. Titration of the ALOX12 antibody may be required due to differences in protocols and secondary/substrate sensitivity.

Immunogen

A portion of amino acids 618-650 from the human protein was used as the immunogen for the ALOX12 antibody.

Storage

Aliquot the ALOX12 antibody and store frozen at -20°C or colder. Avoid repeated freeze-thaw cycles.

