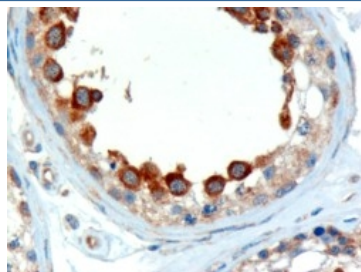


## ALMS1 Antibody (R35807)

Catalog No.	Formulation	Size
R35807-100UG	0.5 mg/ml in 1X TBS, pH7.3, with 0.5% BSA (US sourced) and 0.02% sodium azide	100 ug

[Bulk quote request](#)

Availability	1-3 business days
Species Reactivity	Human
Predicted Reactivity	Cow, Dog, Mouse, Rat
Format	Antigen affinity purified
Host	Goat
Clonality	Polyclonal (goat origin)
Isotype	Goat Ig
Purity	Antigen affinity
Gene ID	7840
Applications	Immunohistochemistry (FFPE) : 1-3ug/ml ELISA (peptide) LOD : 1:32000
Limitations	This ALMS1 antibody is available for research use only.



IHC testing of FFPE human testis with ALMS1 antibody at 2ug/ml. Microwaved antigen retrieval with Tris/EDTA buffer pH9, HRP-staining.

### Description

Additional name(s) for this target protein: Alstrom syndrome 1

### Application Notes

Optimal dilution of the ALMS1 antibody should be determined by the researcher.

1. The ALMS1 antibody may cross react with hypothetical protein (XP\_169104) and ERAL1 (NP\_005693).

## **Immunogen**

Amino acids RVTNQLLGRKVPWD were used as the immunogen for this ALMS1 antibody.

## **Storage**

Aliquot and store the ALMS1 antibody at -20oC.