

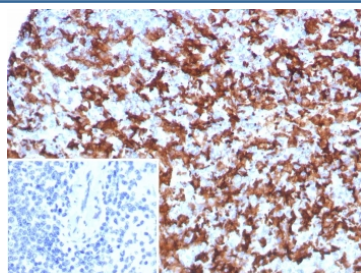
Allograft inflammatory factor 1 Antibody / AIF1 / IBA1 [clone AIF1/8970R] (V5150)

Catalog No.	Formulation	Size
V5150-100UG	0.2 mg/ml in 1X PBS with 0.1 mg/ml BSA (US sourced), 0.05% sodium azide	100 ug
V5150-20UG	0.2 mg/ml in 1X PBS with 0.1 mg/ml BSA (US sourced), 0.05% sodium azide	20 ug
V5150SAF-100UG	1 mg/ml in 1X PBS; BSA free, sodium azide free	100 ug

Recombinant **RABBIT MONOCLONAL**

[Bulk quote request](#)

Availability	1-3 business days
Species Reactivity	Human
Format	Purified
Host	Rabbit
Clonality	Recombinant Rabbit Monoclonal
Isotype	Rabbit IgG, kappa
Clone Name	AIF1/8970R
Purity	Protein A/G affinity
UniProt	P55008
Localization	Cytoplasm, Cell Surface
Applications	Immunohistochemistry (FFPE) : 1-2ug/ml for 30 min at RT
Limitations	This Allograft inflammatory factor 1 antibody is available for research use only.



IHC staining of FFPE human spleen tissue with Allograft inflammatory factor 1 antibody (clone AIF1/8970R). Inset: PBS used in place of primary Ab (secondary Ab negative control). HIER: boil tissue sections in pH 9 10mM Tris with 1mM EDTA for 20 min and allow to cool before testing.

Description

AIF1 is a cytoplasmic, calcium-binding protein that is thought to play a role in macrophage activation and function. AIF1,

containing two EF domains, is induced by cytokines and Interferons. In an unstimulated state, AIF1 colocalizes with actin, and upon stimulation, translocates to lamellipodia. It is also a marker of human microglia and is expressed by macrophages in injured skeletal muscle. The gene encoding AIF1 resides in the tumor necrosis factor (TNF) cluster of genes, located in the region represented by the human major histocompatibility complex (MHC).

Application Notes

Optimal dilution of the Allograft inflammatory factor 1 antibody should be determined by the researcher.

Immunogen

A recombinant partial protein sequence (within amino acids 1-146) from the human protein was used as the immunogen for the Allograft inflammatory factor 1 antibody.

Storage

Aliquot the Allograft inflammatory factor 1 antibody and store frozen at -20oC or colder. Avoid repeated freeze-thaw cycles.