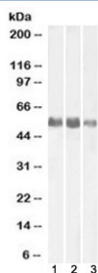


## Alkaline Phosphatase Antibody (tissue-nonspecific) (R36448)

Catalog No.	Formulation	Size
R36448-100UG	0.5 mg/ml in 1X TBS, pH7.3, with 0.5% BSA (US sourced) and 0.02% sodium azide	100 ug

[Bulk quote request](#)

<b>Availability</b>	1-3 business days
<b>Species Reactivity</b>	Human, Mouse, Rat
<b>Format</b>	Antigen affinity purified
<b>Host</b>	Goat
<b>Clonality</b>	Polyclonal (goat origin)
<b>Isotype</b>	Goat Ig
<b>Purity</b>	Antigen affinity
<b>UniProt</b>	P05186
<b>Applications</b>	Western Blot : 0.1-0.3ug/ml ELISA (peptide) : 1:64000
<b>Limitations</b>	This Alkaline Phosphatase antibody is available for research use only.



Western blot testing of human 1) kidney, 2) lung and 3) adrenal gland lysate with Alkaline Phosphatase antibody (tissue-nonspecific) at 0.1ug/ml. Predicted molecular weight ~57 kDa, but can be observed at up to ~75 kDa due to glycosylation.

### Description

Additional name(s) for this target protein: ALPL antibody; Alkaline phosphatase, liver/bone/kidney

For a clone-defined immunohistochemistry-focused ALPL reagent with extensive tumor tissue staining data, see our [Alkaline Phosphatase Tissue Non Specific Antibody](#) page featuring clone ALPL/597.

### Application Notes

The stated application concentrations are suggested starting points. Titration of the Alkaline Phosphatase antibody may be required due to differences in protocols and secondary/substrate sensitivity.

## **Immunogen**

Amino acids ELQKLNTNVAKN were used as the immunogen for this Alkaline Phosphatase antibody.

## **Storage**

Aliquot and store the Alkaline Phosphatase antibody at -20oC.