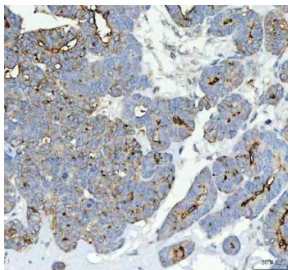


## Alkaline Phosphatase Antibody Tissue Non Specific (R30169)

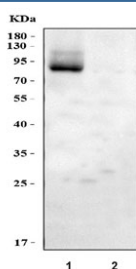
Catalog No.	Formulation	Size
R30169	0.5mg/ml if reconstituted with 0.2ml sterile DI water	100 ug

**Bulk quote request**

<b>Availability</b>	1-3 business days
<b>Species Reactivity</b>	Human
<b>Format</b>	Antigen affinity purified
<b>Host</b>	Rabbit
<b>Clonality</b>	Polyclonal (rabbit origin)
<b>Isotype</b>	Rabbit IgG
<b>Purity</b>	Antigen affinity
<b>Buffer</b>	Lyophilized from 1X PBS with 2.5% BSA and 0.025% sodium azide/thimerosal
<b>UniProt</b>	P05186
<b>Applications</b>	Western Blot : 0.5-1ug/ml Immunohistochemistry (FFPE) : 2-5ug/ml
<b>Limitations</b>	This Alkaline Phosphatase antibody is available for research use only.



Alkaline Phosphatase Antibody Parotid Acinar Cell Carcinoma IHC.  
Immunohistochemistry staining of FFPE human parotid acinar cell carcinoma tissue with Alkaline Phosphatase antibody. HIER: boil tissue sections in pH8 EDTA for 20 min and allow to cool before testing.



Western blot testing of human 1) HeLa and 2) 293T cell lysate with Alkaline Phosphatase antibody. Predicted molecular weight ~57 kDa, but can be observed at higher molecular weights due to glycosylation.

## Description

Alkaline phosphatase, tissue-nonspecific isozyme is an enzyme that in humans is encoded by the ALPL gene. There are at least four distinct but related alkaline phosphatases: intestinal, placental, placental-like, and liver/bone/kidney (tissue non-specific). The first three are located together on chromosome 2 while the tissue non-specific form is located on chromosome 1. Liver/bone/kidney alkaline phosphatase, known as tissue-nonspecific, acts physiologically as a lipid-anchored phosphoethanolamine (PEA) and pyridoxal-5-prime-phosphate (PLP) ectophosphatase. Mice that lack a functional form of this enzyme show normal skeletal development. This enzyme has been linked directly to a disorder known as hypophosphatasia, a disorder that is characterized by hypercalcemia and includes skeletal defects.

For a clone-defined immunohistochemistry-focused ALPL reagent with extensive tumor tissue staining data, see our [Alkaline Phosphatase Tissue Non Specific Antibody](#) page featuring clone ALPL/597.

## Application Notes

Titration of the Alkaline Phosphatase antibody may be required due to differences in protocols and secondary/substrate sensitivity.

## Immunogen

Amino acids 21-35 (EKEKDPKYWRDQAQE) from human ALPL were used as the immunogen for this tissue-nonspecific Alkaline Phosphatase antibody.

## Storage

The lyophilized Alkaline Phosphatase antibody can be stored at 4oC to -20oC. After reconstitution, aliquot and store at -20oC. Avoid repeated freezing and thawing.