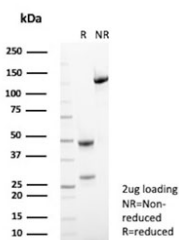


Alkaline Phosphatase Antibody / ALPL [clone SPM372] (V7792)

Catalog No.	Formulation	Size
V7792-100UG	0.2 mg/ml in 1X PBS with 0.1 mg/ml BSA (US sourced) and 0.05% sodium azide	100 ug
V7792-20UG	0.2 mg/ml in 1X PBS with 0.1 mg/ml BSA (US sourced) and 0.05% sodium azide	20 ug
V7792SAF-100UG	1 mg/ml in 1X PBS; BSA free, sodium azide free	100 ug

Bulk quote request

Availability	1-3 business days
Species Reactivity	Human
Format	Purified
Host	Mouse
Clonality	Monoclonal (mouse origin)
Isotype	Mouse IgG1, kappa
Clone Name	SPM372
Purity	Protein G affinity chromatography
UniProt	P09923
Localization	Cell surface, cytoplasmic
Applications	Immunohistochemistry (FFPE) : 1-2ug/ml
Limitations	This Alkaline Phosphatase antibody is available for research use only.



SDS-PAGE analysis of purified, BSA-free Alkaline Phosphatase antibody (clone SPM372) as confirmation of integrity and purity.

Description

There are at least four distinct but related alkaline phosphatases: intestinal, placental, placental-like, and liver/bone/kidney (tissue non-specific). The first three are located together on chromosome 2, while the tissue non-specific form is located on chromosome 1. The product of this gene is a membrane bound glycosylated enzyme that is not expressed in any particular tissue and is, therefore, referred to as the tissue-nonspecific form of the enzyme. The exact physiological function of the alkaline phosphatases is not known. A proposed function of this form of the enzyme is matrix mineralization; however, mice that lack a functional form of this enzyme show normal skeletal development. This enzyme has been linked directly to hypo-phosphatasia, a disorder that is characterized by hypercalcemia and includes skeletal defects. The character of this disorder can vary, however, depending on the specific mutation since this determines age of onset and severity of symptoms. Alternatively spliced transcript variants, which encode the same protein, have been identified for this gene.

For a clone-defined immunohistochemistry-focused ALPL reagent with extensive tumor tissue staining data, see our [Alkaline Phosphatase Tissue Non Specific Antibody](#) page featuring clone ALPL/597.

Application Notes

Optimal dilution of the Alkaline Phosphatase antibody should be determined by the researcher.

Immunogen

Bovine intestinal alkaline phosphatase was used as the immunogen for the Alkaline Phosphatase antibody.

Storage

Store the Alkaline Phosphatase antibody at 2-8oC (with azide) or aliquot and store at -20oC or colder (without azide).