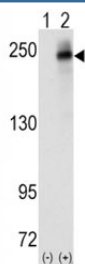


ALK Antibody (F50550)

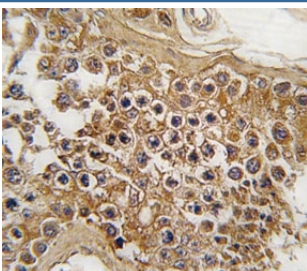
Catalog No.	Formulation	Size
F50550-0.4ML	In 1X PBS, pH 7.4, with 0.09% sodium azide	0.4 ml
F50550-0.08ML	In 1X PBS, pH 7.4, with 0.09% sodium azide	0.08 ml

[Bulk quote request](#)

Availability	1-3 business days
Species Reactivity	Human
Format	Purified
Host	Rabbit
Clonality	Polyclonal (rabbit origin)
Isotype	Rabbit Ig
Purity	Purified
UniProt	Q9UM73
Applications	Western Blot : 1:1000 IHC (Paraffin) : 1:10-1:50
Limitations	This ALK antibody is available for research use only.



Western blot analysis of ALK antibody and 293 cell lysate (2 ug/lane) either nontransfected (Lane 1) or transiently transfected with the human gene (2). Predicted molecular weight: 190-220 kDa.



ALK Antibody Testicular Tissue IHC. Immunohistochemistry analysis of FFPE human testis tissue using ALK antibody demonstrates diffuse cytoplasmic and membranous HRP-DAB brown staining within seminiferous epithelial-associated cellular populations. The staining pattern highlights distinct cellular outlining and intracellular signal distribution consistent with ALK-associated protein expression in testicular tissue compartments.

Description

Anaplastic lymphoma kinase, a member of the insulin receptor subfamily of Tyr protein kinases, is an orphan receptor. It appears to play an important role in the normal development and function of the nervous system. This Type I membrane protein is expressed in brain and CNS and in the small intestine and testis, but not in normal lymphoid cells. A form of non-Hodgkin's lymphoma is characterized by a chromosomal translocation t(2;5)(p23;q35) that involves NPM1 and ALK. The protein contains 1 LDL-receptor class A domain and 2 putative MAM domains.

For additional ALK and oncogenic kinase research antibodies targeting fusion protein signaling, lung cancer biomarkers, and lymphoma-associated receptor tyrosine kinase pathways, explore the broader [ALK Antibody](#) page featuring recombinant rabbit monoclonal clone ALK1/6698R.

Application Notes

Titration of the ALK antibody may be required due to differences in protocols and secondary/substrate sensitivity.

Immunogen

A portion of amino acids 636-666 from the human protein was used as the immunogen for this ALK antibody.

Storage

Aliquot the ALK antibody and store frozen at -20°C or colder. Avoid repeated freeze-thaw cycles.